

# CAPABILITY STATEMENT

## ONSHORE OIL & GAS SERVICES

### THE PURPOSE

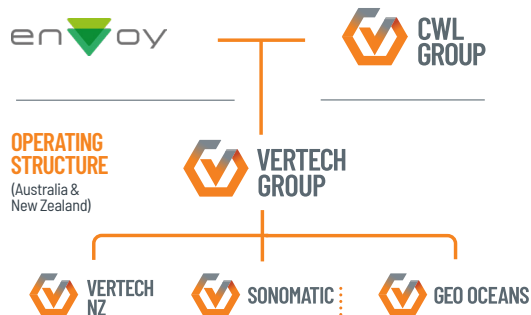
This document is composed to assist our clients and the supply chain to understand our group operating structure along with a high-level understanding of the benefits, services, key people and equipment associated with our world leading onshore oil and gas inspection, maintenance and specialist packages.



# COMBINED SERVICES

The bringing together of the services and specialisations provided by Vertech, Geo Oceans and Sonomatic couldn't be more complimentary or interlink more seamlessly with a combined offering Mini ROV's & UAV's, underdeck Jetty and wharf integrity systems, advanced and conventional NDT services coupled with Specialist maintenance packages all within one group.

## OWNERSHIP STRUCTURE



## OFFICE LOCATIONS





# ONSHORE – OVERVIEW

The Vertech on-shore team consists of a highly specialised, technically experienced management and high performing, multi-skilled site based teams, armed with the latest technology, proprietary inspection tools and cutting edge software solutions. We consistently strive for excellence and we believe we are known throughout the industry as the company of choice for executing and delivering on high profile technically challenging scopes due to our commitment to innovation, the best people and our absolute client focus.



## ACCREDITATIONS

- IRATA Rope access trade associated (Operator & trainer)
- NATA Certification for Non destructive testing
- NATA Certification for lifting equipment inspections
- NATA Certification for In service inspection
- DROPS certification
- ISO 9001:2015
- ISO 29001:2010
- ISO 14001:2015
- OHSAS 45001:2018
- AS/NZS 45001:2018
- Civil Aviation Safety Authority Licensed (Drones)



# ONSHORE SERVICES

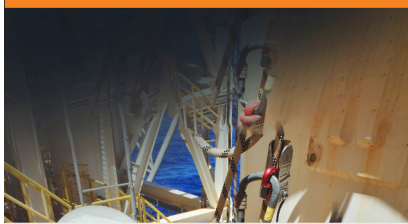
## ONSHORE SERVICES

### IN SERVICE INSPECTION



CERTIFIED COMPLIANCE INSPECTION FOR PROCESS, PLANT & STRUCTURE

### NON DESTRUCTIVE TESTING



A COMPREHENSIVE RANGE OF HIGH QUALITY CONVENTIONAL & SPECIALISED NDT

### SPECIALIST MAINTENANCE



HIGH MOBILITY SPECIALIST MAINTENANCE SERVICES

### REMOTE DIGITAL VISUAL INSPECTION



INNOVATIVE ROVI SERVICES USING LATEST CRAWLERS AND TECHNOLOGY

### FABRIC MAINTENANCE



HIGH MOBILITY PRESSURE SYSTEM, JETTY AND STRUCTURAL FABRIC MAINTENANCE

### LIFTING EQUIPMENT INSPECTION & MANAGEMENT



NATA ACCREDITED INSPECTION OF LIFTING EQUIPMENT AND CRANES

## SPECIALIST PACKAGES

### PASS PACKAGE



PIPE ACCESS AND IRM SOLUTION FOR CORROSION UNDER PIPE SUPPORTS

### MLA MAINTENANCE



EFFICIENT AND COMPREHENSIVE MLA MAINTENANCE

### ASPECT PACKAGE



A HIGH MOBILITY PACKAGE FOR UNDERDECK INSPECTION AND MAINTENANCE SERVICES

### V-RESCUE



SPECIALISED CONFINED SPACE AND STANBY RESCUE SOLUTIONS

### LNG CONSTRUCTION PACKAGE



A MULTI-DISCIPLINED, HIGH MOBILITY CONSTRUCTION SOLUTION

### FABRIC MAINTENANCE



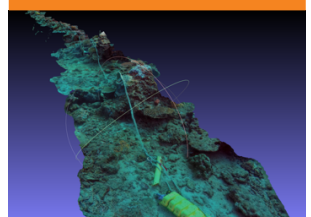
TURNKEY HIGH MOBILITY FABRIC MAINTENANCE SOLUTIONS

### UAV INSPECTION



BESPOKE: INDUSTRY LEADING UAV INSPECTION SOLUTIONS

### UMS PACKAGE



UNMANNED MARINE SCIENCE AND SURVEY PACKAGE



# CASE STUDIES

## SPECIALIST MAINTENANCE PACKAGES

### Aspect Package – Case Study



Vertech were engaged to complete fabric maintenance on a jetty with a coating system containing high levels of Lead in a sensitive environmental area.

Our engineered suspension deck provided a complete encapsulated working area for welding, blasting and paint works to be carried out used on a rolling work front basis. This saved the client 40% in costs, reduced manual handling 55% and was completed with a perfect safety and environmental record.

### UAV Flare inspection – Case Study



Vertech mobilised a multiskilled team comprising of CASA certified pilots and AICIP inspectors to enable a targeted inspection of an LNG flare and structure.

We worked closely with the client and Civil Aviation Safety Authority (CASA) to ensure detailed project planning was completed and once on site our team was able to meet and exceed site requirements.

The UAV activities and overall inspection was completed with great success with a perfect safety record, on time and on budget.

### LNG Specialist Electrical Package – Case Study



Vertech were engaged to install cable tray sections to the existing steel structure of the LNG storage tanks on as part of the expansion of an LNG facility from an import terminal to a liquefaction and export facility. Our multi-disciplined team were able to establish access, install the full height of 210 ft of cable tray and demobilize on all three storage tanks in 12 productive shifts with a 7 man team. Utilization of Rope Access Craft labor removed the requirement for scaffold, scaffold labor and additional mechanical labor, resulting in an overall saving in man hours of over 95%.

### DPS Package – Case Study



Our client's requirement was for corrosion mapping of 100% of the bottom half of two Slugcatcher vessels. Scanning speeds of standard automated corrosion mapping systems such as Raptor II or RMS scanners were evaluated but deemed cost prohibitive. Sonomatic developed the Raptor AS-Scanner specifically for this inspection, which offered both Corrosion Mapping and Multiskip screening deployment. The tool size was specifically designed to meet the requirements of increased coverage and speed required by the client.

# VERTECH SERVICE OVERVIEW

Vertech are a Specialist Access, Inspection and Maintenance provider. We pride ourselves on our client focus with an emphasis on supplying high value, innovative and quality services to achieve excellence in all the projects we execute.

We apply world's best practice on the basis of extensive industry experience to excel in industries where safety, quality and reliability are of the highest importance. The core value we place above all others is our care for each other, our clients and the environment.



PROJECT DELIVERY



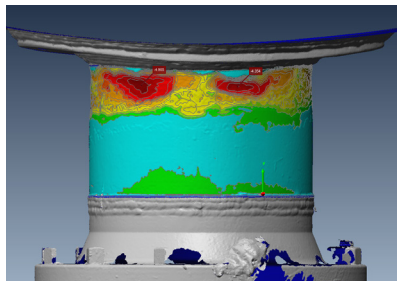
MARINE CLASS SURVEY



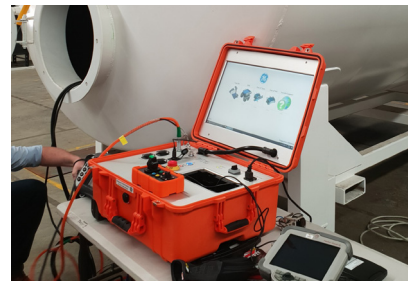
SPECIALIST ACCESS



NDT INSPECTION SERVICES



INTEGRITY MANAGEMENT



REMOTE DIGITAL VISUAL INSPECTION



SPECIALIST MAINTENANCE PACKAGES



IRATA TRAINING



[vertech.com.au/downloads](https://www.vertech.com.au/downloads)



# SONOMATIC OVERVIEW



Sonomatic is a worldwide organisation whose expertise in ultrasonic inspection design, development and application, dates back more than 30 years to our roots in the nuclear sector. Today the company has widened its focus and provides proven yet pioneering services to customers in defence and power generation, but our largest client base is in the challenging oil and gas industry, both upstream and downstream.

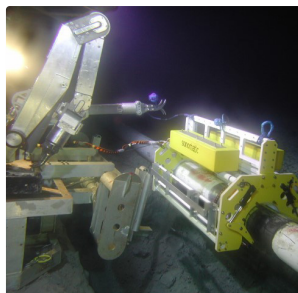
Sonomatic's capabilities for the development of software, systems and scanners, often for bespoke applications, coupled with the expertise of our engineers, means we are among the leaders within this highly specialised field.

Sonomatic pioneered industrial application of a range of inspection methods now widely used, e.g. Time of Flight Diffraction (TOFD), and continues with active development of innovative inspection and deployment methods that are applied by our own team of experienced field service engineers.

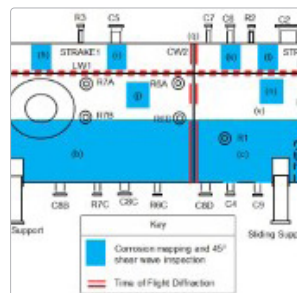
Sonomatic also provides Integrity Services, supporting our clients with planning and evaluation of inspections and using advanced statistical methods to maximise the value of data obtained. Integration of our integrity and inspection services for non-intrusive inspection (NII) benefits the client by allowing vessels and equipment suitable for NII to be identified and reduces the need for costly plant shut downs to assess the internal condition.



ADVANCED NDT INSPECTION



SUBSEA INSPECTION

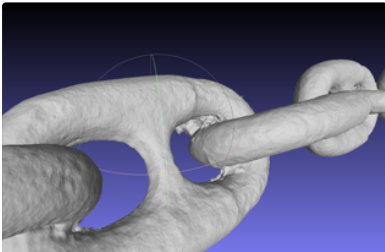


# GEO OCEANS OVERVIEW



Geo Oceans develops innovative mini-ROV technology to provide clients with asset deployed ROV inspection services. The Mini-ROV Class Survey System (CSS) consists of advanced sensor, tooling and manipulator technology that has been developed by Geo Oceans to provide cost savings compared to traditional diver and work-class ROV methodologies.

Geo Oceans also work with Vertech to provide our clients with industry-leading and turnkey Class inspection services using Remote Access technologies. Sonomatic compliment this team by bringing Specialist Advanced NDT services which are deployed using the mini-ROV CSS.



3D COMPONENT MODELLING  
SERVICES



ADVANCED SUBSEA NDT SERVICES



ASSET DEPLOYED INSPECTIONS



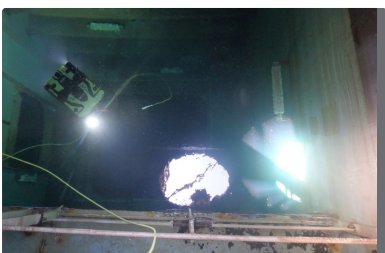
LIGHT TOOLING SERVICES



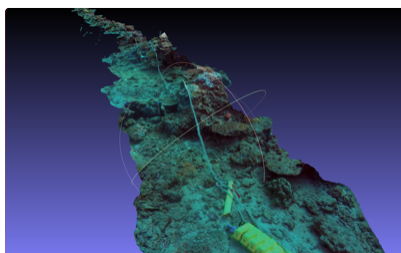
UNMANNED (ROV) HULL SURVEY  
PACKAGE



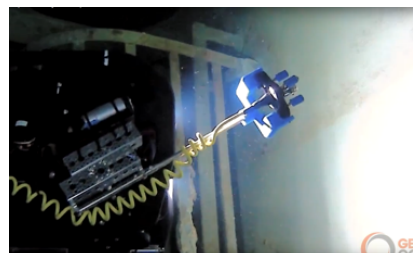
FIXED PLATFORM MINI-ROV PACKAGE



UNMANNED (ROV) CLASS TANK  
INSPECTION AND NDT PACKAGE



UNMANNED MARINESCIENCE &  
SURVEY PACKAGE



SUBSEA CONSTRUCTION & DECOM  
SUPPORT SERVICES



# CONTACTS

## VERTECH

### Adam Haling

Onshore Manager

T: +61(8) 6168 7600

E: adam.haling@vertechgroup.com.au

### Sean Peters

RDVI & Project Coordinator

T: +61(8) 6168 7600

E: sean.peters@vertech.com.au

### Jon Millen

Project Coordinator

T: +61(8) 6168 7600

E: jon.millen@vertechgroup.com.au

### Brenton Jenke

Operations Manager

T: +61 (8) 6168 7600

E: Brenton.Jenke@vertechgroup.com.au

### Andy McKenzie

Regional Manager - NZ

T: +64 6 751 0910

E: Andy.Mckenzie@vertechnz.co.nz

### Chris Peckham

Project Manager - NZ

T: +64 6 751 0910

E: Chris.Peckham@vertechnz.co.nz

## SONOMATIC

### Alessandro Cesan

Advanced Inspection Services – West Australia

T: +61 (0) 498 442 666

E: alex.cesan@sonomatic.com

### Judd McCann

Advanced Inspection Services – East Australia

T: +61 (0) 488 442 019

E: judd.mccann@sonomatic.com

### Tyron Kimble

Engineering Services – Australia

T: +61 (0) 427 277 603

E: tyron.kimble@sonomatic.com

### Zach McCann

All Services – Australia & SE Asia

T: +61 (0) 404 797 670

E: zach.mccann@sonomatic.com

## GEO OCEANS

### Ben Brayford

Geo Oceans

T: +61 (8) 6168 7600

E: Ben.Brayford@geooceans.com

### Nick Veitch

Geo Oceans

T: +61 (8) 6168 7611

E: Nick.Veitch@geooceans.com



www.vertech.com.au



www.geooceans.com



www.sonomatic.com.au