

CAPABILITY STATEMENT

MARINE INFRASTRUCTURE

THE PURPOSE

This document is composed to assist our clients and the supply chain to understand our group operating structure along with a high-level understanding of the benefits, services and specialist packages associated with our marine infrastructure.



VERITECH



WHO WE ARE



Vertech provide specialist access, inspection, maintenance and engineering services across various industries. We deliver solutions to support companies managing assets and infrastructure in diverse sectors. Our expertise extends to offering advanced access systems and inspection services for maintenance, upgrades, repairs and remediation projects.

MARINE INFRASTRUCTURE

The marine sector is dynamic, requiring speed, efficiency and quality, with the same being expected from its contractors. Vertech prides itself on its ability to provide high-quality inspection and maintenance services performed by an agile workforce strategically located across the Asia Pacific.

Our Marine Infrastructure's client-centric approach has been refined and perfected through years of industry experience. Genuinely understanding each client's unique needs has enabled us to deliver a best-in-class outcome on capital projects, asset maintenance campaigns, and major turnarounds with unparalleled cost, time, and safety benefits.

Vertech's passionate and experienced people are another critical part of our success. Our Asia Pacific team has been hand-selected from the best and brightest to ensure our clients have the suitable systems, equipment and support to meet their needs.



GROUP ACCREDITATIONS

ISO 9001:2015	Vertech IRATA Operator
ISO 14001:2015	LR Thickness Measurements of Hull
ISO 29001:2010	Structure
ISO 45001:2018	NATA Lifting and Lifted Inspection
ABS Approved Supplier for UAV	NATA Pressure Vessel Inspection
ABS Remote Inspection Techniques (ROV)	NATA NDT Inspection
BV Remote Inspection Techniques	CASA UAV Accreditation

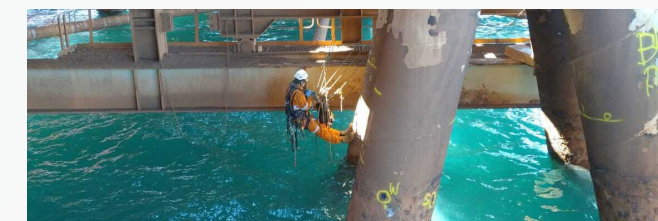
CASE STUDIES

DAMPIER SALT JETTY REFURBISHMENT AND DECKING



Vertech designed a lightweight access system to cover the underside of the DSL jetty with 100% encapsulation for the removal of lead-based paint system requiring 100% encapsulation and blast medium capture. The scope included NDT, Ropes, steelwork replacement and sponge jet paint and blast.

RIO TINTO PARKER POINT STAGE 2 WHARF PILE STRUCTURAL INTEGRITY



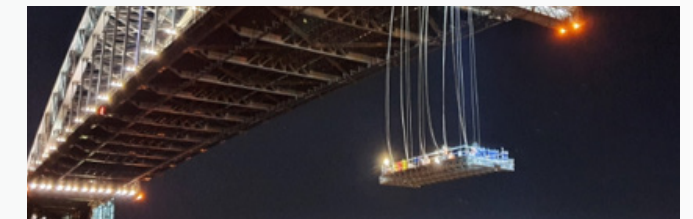
Vertech was engaged by Rio Tinto for the Parker Point Stage 2 Wharf project, which involves complex SAP beam removals and jetty pile inspections requiring coordinated multi-disciplinary efforts. A key milestone was the successful dual-lift removal of two 13-ton beams, showcasing strong technical planning, safety, and collaboration between Vertech, Sonomatic, and Rio Tinto.

DLNG WHARF DRONE AND 3D MODELLING



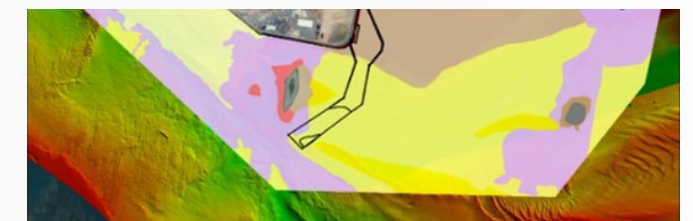
Australian UAV (AUAV) successfully completed a comprehensive General Visual Inspection (GVI) of the Wharf Structure and Piles using drone technology. The project aimed to assess the current condition of the jetty, specifically focusing on the underside of the Wharf Structure and Piles. The inspection encompassed an approximate 1.3km-long jetty, which included five expansion loops, a loading platform, four berthing dolphins, and six mooring dolphins.

SYDNEY HARBOUR BRIDGE



Awarded a multi-year contract to supply the access platforms and associated engineering, rigging, scaffolding and wider access services for the underside remediation, repair and coatings for the heritage listed Sydney harbour bridge. The 3-year project will be nearing completion towards quarter 3 of 2023.

DARWIN HARBOUR WHARF EXPANSION CORAL MONITORING



Geo Oceans designed and implemented a comprehensive coral monitoring program to facilitate regulatory approvals and ongoing compliance for a substantial wharf expansion project undertaken by a government client in Darwin Harbour. The GO Visions™ technology was deployed using remote methods reducing cost and safety risk for the client.

KGP - BERTH 3 CATWALK REMEDIATION



Vertech delivered the inspection and structural remediation using composite wraps. Campaign on the Karratha Gas Plant Berth 3 Jetty Catwalks. The VER-TRUSS access system was utilised to deliver safe and efficient access.

MARINE INFRASTRUCTURE SERVICES

JETTY 3D DIGITAL TWIN

AUAV's inSite™ is a proprietary web GIS platform for presenting high-resolution 3D models with a linked photo view for asset inspection, measurement and annotation tools, including issue discussion threads, drone and other data sources, satellite data, GIS and BIM overlays.

Clients or 3rd party engineering firms can use the 3D models to create work packs and tenders, manage asset integrity or for general inspection review.

MECHANICAL FITTING

Our multi-disciplinary teams provide high mobility mechanical maintenance, upgrade or repair services on a range of equipment during routine operations, shutdowns, turnarounds or on a call-out basis.

PAINTING AND BLASTING

Vertech's fabric maintenance teams provide a range of high-mobility surface treatments and coating system applications, all underpinned by our various access specialisations. In addition to standard or conventional methods, we can apply a range of composite wraps explicitly selected for each scenario and structure.

HAZARDOUS AREA INSPECTION

Our team and electrical partners provide end-to-end electrical solutions, including engineering, design, procurement, installation and repair. Our electrical specialisation focuses on Ex hazardous area inspections, testing, compliance and installations with a custom-built management system with RFID capability.

ACCESS MANAGEMENT

Vertech was a pioneer of rope access in Australia. We imported the first decking systems to the Asia Pacific region and were responsible for designing and installing the first offshore safety netting and tension netting systems in Australia. Our team is also highly experienced in installing scaffold and custom access platforms on oil and gas sites, having done so across the country.

WELDING AND BOILER MAKING

We offer various site welding services, including welding procedure qualifications (WPS/ PQR/WQR), QA/QC, and NDT verification. Our teams have completed liner replacements, bin repairs, structural repairs, jetty weld refurbishment and equipment modification work.

MAINTENANCE

INSPECTION



NON DESTRUCTIVE TESTING

Vertech Group are certified to ISO 17025 as an NDT inspection body by the National Association of Testing Authorities (NATA). Our NDT inspection personnel are highly qualified, skilled and experienced in the application of conventional and advanced inspection and testing methods.

UAV AND REMOTE DIGITAL VISUAL INSPECTION (RDVI)

Vertech was the first Australasian company accredited for ABS and Lloyd's registered UAV inspections. Our fleet of UAVs is capable of extensive land mass survey and mapping, jetty surveying, process, plant and structural inspection and confined space inspections.

Our RDVI Division has an active partnership with GE Inspection Robotics to offer cutting-edge RDVI inspections. Our team combines proprietary tools and systems with the latest crawlers and advanced camera systems to eliminate the risk of confined space entry.

API AND AICIP INSPECTION

Vertech provides comprehensive inspections of pressure piping and pressure vessels. Our SMEs are trained in applying Australian and NZ in-service standards such as AS3788, AS4343 and AS1210. Our team is also qualified in API codes such as API 510, API 570, and API 579 and ASME codes ASME B31.3 and ASME B16.5.

MINI ROV INSPECTION

Through our wholly-owned subsidiary Geo Oceans, we deliver detailed structural inspections, post-cyclone surveys, NDT and other detailed environmental or industrial Inspections with Mini Remotely Operated Vehicles (Mini-ROV). We can remove the risk, cost, and time associated with diving operations by deploying from the shore, jetty, or nearby structures.

AUTONOMOUS UNDERWATER VEHICLE (AUV)

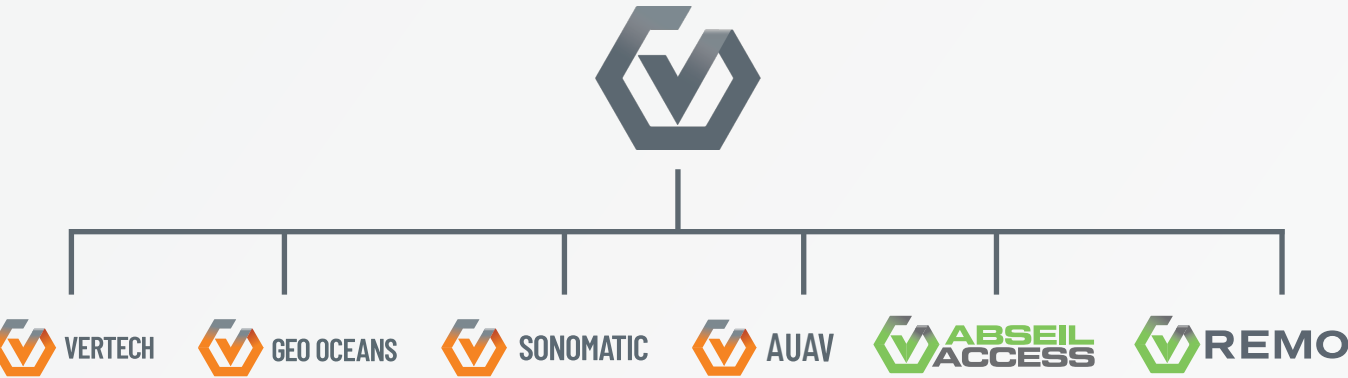
AUVs are unmanned vehicles that navigate deep seas autonomously. They are used offshore for seabed mapping, pipeline inspection, and more. AUVs are a safer, cost-effective, and time-efficient alternative to traditional methods. They reduce the need for human divers in potentially hazardous environments. AUVs provide high-resolution data for accurate decision-making in various projects. The deployment of AUVs ensures enhanced safety and sustainability in ocean-based industries.

COMBINED SERVICES

Vertech work alongside a Group of affiliated companies that together, deliver a comprehensive range of asset integrity, inspection, maintenance and specialist access services across a wide range of industries and sectors across Australia and the Asia Pacific. Our shared capabilities span project management, NDT, drone and ROV inspections, 3D modelling, specialist access and maintenance, and environmental and export infrastructure services.

- Vertech** – Experts in specialist access, NDT and inspection, maintenance, and repairs.
- Geo Oceans** – Leaders in Mini-ROV ORM and water inspection, with expertise in AUV and ASV deployment.
- Sonomatic** – A global leader in specialised NDT and integrity inspection solutions.
- AUAV** – Specialists in UAV, drone-based inspections, and 3D modelling.
- Remo Technical Services** – A leading supplier of turbine installation, maintenance, and inspection services.
- Abseil Access** – Specialists in bridge engineering, geotechnical slope stabilisation, rockfall protection, and rope access solutions.

Together, we deliver tailored service packages designed to meet the specific needs of each client and asset. By collaborating across our group of companies, we drive innovation, improve safety, and ensure consistent delivery of high standards across the mining and infrastructure sectors.



OUR 4 CORE VALUES



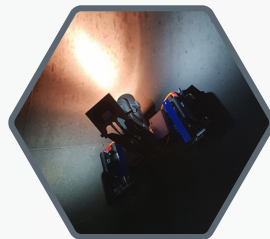
PEOPLE



SAFETY



QUALITY



INNOVATION

GROUP SUMMARY



Geo Oceans is an award winning subsea services provider delivering innovative and disruptive ROV inspection solutions to a global client base. We specialise in developing and deploying small ROV systems and subsea robotics directly from assets or vessels of opportunity to provide clients with reliable, safe, low carbon and low cost solutions for managing subsea asset integrity. We are also experts in the planning and execution of offshore surveys, using autonomous survey vehicles (AUV).



Sonomatic specialise in the design, development and application of Non-Destructive Testing (NDT) inspections. Since the company's formation in the 1980s, we have combined these NDT processes with integrity engineering capabilities to provide fully integrated inspection packages that directly meet the needs of the client.

Bringing innovative bespoke inspection solutions to the market through in-house development of equipment, software and robotics, Sonomatic resides as the global leader for ROV-deployed subsea inspection and Non-Intrusive Inspection (NII) technologies.



AUAV is a drone service provider established in 2013. We offer topographical surveys, LiDAR, inspection, 3D modelling, and bespoke projects. Our team are full-time employees, ensuring quality control. Our proprietary inSite data solution provides consulting, capture, and hosting. We're a top 20 drone service provider globally, certified by the Australian Civil Aviation Safety Authority and insured.



REMO Technical Services specialises in turbine installation, maintenance, and inspection. We offer a managed solution based on extensive experience in wind and renewable energy building on their reputation established through successful wind turbine installation and commissioning projects across Europe.



Abseil Access has supplied industry-leading services including bridge design, bridge engineering and construction, Geotechnical slope stabilisation and rockfall protection, conservation, and rope access services across a multitude of sectors since 1992. In that time, the Abseil Access team have come to understand the frequently encountered challenges our customers face and how we can provide maximum value. Our offices are located in Wellington, Christchurch, Nelson, and New Plymouth to support operations in even the most remote parts of New Zealand.

KEY CONTACTS

VERTECH

Craig Davies
Group Development Manager
T: +61 (8) 6168 7600 | M: +61 417 855 573
E: Craig.Davies@vertech.com.au

Paul Lavender
General Manager – Western Australia
T: +61 (8) 6168 7600 | M: +61 417 961 016
E: Paul.Lavender@vertech.com.au

John Rose
General Manager – East Coast
T: +61 (8) 6168 7600 | M: +61 407 047 169
E: John.Rose@vertech.com.au

Adam Haling
General Manager – Infrastructure
T: +61 (8) 6168 7600 | M: +61 475 509 140
E: Adam.Haling@vertech.com.au

Stephen Brett
Manager – Core Contracts and
Offshore Services (WA/NT)
T: +61 (8) 6168 7600 | M: +61 407 818 532
E: Stephen.Brett@vertech.com.au

Rob Porter
Department Manager – Frontline and Ad Hoc
T: +61 (8) 6168 7600 | M: +61 497 327 024
E: Rob.Porter@vertech.com.au

SONOMATIC

Alex Cesan
General Manager – Australia and NZ
T: +61 498 442 666
E: Alex.Cesan@sonomatic.com.au

Zach McCann
Region Manager – South East Asia
T: +60 361 581 185 /1180
M: +60 12 555 1569 / +61 404 797 670
E: Zach.Mccann@sonomatic.com.my

Jon Millen
Operations Manager – Australia
T: +61 (8) 6168 7606 | M: +61 477 030 058
E: Jon.Millen@sonomatic.com.au

GEO OCEANS

Nick Veitch
Managing Director
T: +61 (8) 6168 7611 | M: +61 400 352 134
E: Nick.Veitch@geoceans.com.au

Andy Mercer
Operations Manager
T: +61 (8) 6168 7611 | M: +61 410 153 060
E: Andy.Mercer@geoceans.com.au

AUAV

James Rennie
Managing Director
T: 1300 738 521 | M: +61 497 070 576
E: James.Rennie@auav.com.au

Jamie Holyoak
General Manager
T: 1300 738 521 | M: +61 473 136 614
E: Jamie.Holyoak@auav.com.au

Barry Nixon
Operations Manager – UK
T: +44 (0) 1224 823960
E: Barry.Nixon@auav.co.uk

Luke Campbell
Operations Manager – WA/NT
T: 1300 738 521 | M: +61 467 677 886
E: Luke.Campbell@auav.com.au

REMO

Russell Bell
Managing Director
T: +61 7 3361 0612 | M: +61 429 540 606
E: Russell.Bell@remo-ts.com

ABSEIL ACCESS

Alex Wilmshurst
General Manager
T: +64 27 488 2849
E: Alex.Wilmshurst@abseilaccess.co.nz