

# CAPABILITY STATEMENT

---

## MARINE CLASS SERVICES

### THE PURPOSE

This document is composed to assist our clients and the supply chain to understand our group operating structure along with a high-level understanding of the benefits, services, key people and equipment associated with our Marine Department.



# VERITECH

# WHO WE ARE



Vertech provide specialist access, inspection, maintenance and engineering services across various industries. We deliver solutions to support companies managing assets and infrastructure in diverse sectors. Our expertise extends to offering advanced access systems and inspection services for maintenance, upgrades, repairs and remediation projects.

## MARINE CLASS SERVICES

Vertech's Marine and class inspection department prides itself on its industry-leading services and its proactive, solutions-based approach. The marine team is a highly experienced, dedicated team of office and site-based professionals who live and breathe hull structures and class rules. Our team specialises in statutory inspections for the classification of ships such as tank surveys, crop and renew surveys, UWILDS, special surveys and other applicable class inspections for offshore floating structures and subsea infrastructure.

We use the latest technology, proprietary inspection tools and cutting-edge software solutions to not just complete the inspection in the most efficient manner but also to provide high-quality, repeatable and compliant reports, models and data sets that make it easy for the accrediting surveyor and client to achieve all of their specific project requirements.

Vertech is known to provide best-in-class service when it comes to these statutory inspections. By innovating the inspection methodologies, and technologies and through our world-class, in-house class team we have delivered safe and effective class services to every FPSO and FSO in Australia, New Zealand as well as services in West Africa, Brazil, the Gulf of Mexico, and Asia.



## TO GET THE RIGHT RESULTS, YOU NEED THE RIGHT PEOPLE

# GROUP ACCREDITATIONS

CASA ReOc

ISO 9001: 2015

ISO 14001:2015

ISO 29001:2010

ISO 45001:2018

ABS Approved Supplier for UAV

ABS Hull Gauging Firm

ABS Hull Gauging on ESP Vessels

ABS In-Water Survey

ABS Remote Inspection Techniques (ROV)

BV In-Water Survey

BV Remote Inspection Techniques

BV Thickness Measurements of Hull Structures

DNV Close up Survey

DNV In-Water Survey (ROV)

DNV Remote Inspection Techniques

DNV Thickness Measuring

Lloyd's Register Remote Inspection (UAV)

Lloyd's Register Remote Inspection (ROV)

LR Thickness Measurements of Hull Structure

NATA Lifting and Lifted Inspection

NATA Pressure Vessel Inspection

NATA NDT Inspection

Vertech IRATA Operator & Trainer

# ENSURING SAFETY EXCELLENCE ACROSS ALL PROJECTS





# MARINE SERVICES



## MARINE ASSET INTEGRITY MANAGEMENT

Vertech provide a broad array of engineering and repair capabilities to support our clients to manage the integrity of their marine assets. Vertech has a wealth of experience in working with class accreditation and defence bodies to deliver surveys on a five-year cycle or plan/deliver a Risk Based Inspection (RBI).

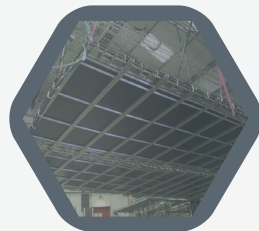
Our services include high-level strategies, engineering analysis, shipyard marine consultancy, project optimisation, and work-pack generation to assist in achieving optimal delivery.



## NON-DESTRUCTIVE TESTING

Vertech has a wealth of conventional and advanced NDT experience across the marine sector and can provide a full suite of accredited NDT services, recommendations, or solutions to ensure compliance with international standards.

Vertech is certified to ISO 17205 as an NDT inspection body by the National Association of Testing Authorities (NATA). Our NDT inspection personnel are highly qualified, skilled, and experienced in applying a wide range of conventional and advanced inspection and testing methods to marine structures.



## SPECIALIST ACCESS MANAGEMENT

As a pioneer of rope access in Australia, Vertech continue to drive innovation in specialist access systems and management. Whether clients require decking systems confined space entry or IRATA rope access solutions, Vertech will assess each situation and provide the best result to meet the deliverables of the scope.

Our world leading IRATA training centre, custom built marine test tanks, and pedigree in access management allows us to plan and deliver the best access solution for the job.



## SPECIALIST MAINTENANCE AND REPAIR

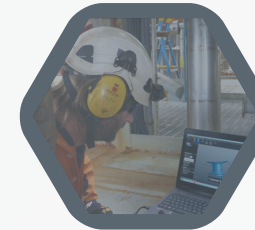
Specialist access systems underpin our range of maintenance, upgrade, repair, and remediation services for marine structures. These can include, mechanical, pipefitting, welding, rigging, composite repairs and coating remediation.

Some of our specialist projects have included major CSE riser turret mooring repairs, marine piping replacements, class accredited welding, CP replacements, and high-mobility coating remediation.



## CONFINED SPACE ENTRY

Vertech's experienced team are capable of carrying out high-risk vessel entries to conduct cleaning and inspection services. Our rigorous HSE procedures ensure comprehensive risk assessments and rescue plans are provided for all scopes.



## PROJECT AND PROGRAM MANAGEMENT

The keys to effective marine class project and program management include strong stakeholder engagement with class surveyors, clients and other specialist contractor's, a dedicated team who live and breathe class rules, and a strong operational team capable of effective planning and coordination with robust communication processes through the entire project life cycle.

Using a suite of project management software systems, our highly experienced team work through all scope, quality, and cost boundaries before entering a detailed planning phase to meet the conditions of class and our client's needs.



## MANNED CLASS INSPECTION

As a testament to our client focus, high-quality people, and delivery, we have been chosen to complete manned marine inspections on every FPSO in Australia and New Zealand, FPSO's in the wider Asia Pacific and West Africa region as well as class inspections on merchant shipping vessels, barges, tugs, and defence vessels.

Our IRATA rope access and accredited NDT inspectors along with our marine, close and general visual inspection capabilities are perfectly suited to high mobility baseline inspections and surveys across a range of asset types as well as QA/QC during dry dock.



## IN-WATER CLASS INSPECTION

Through our subsidiary companies, Geo Oceans and Sonomatic, we have become a leading provider of Mini-ROV and AUV marine class inspection. With our combination of experienced industry experts, a suite of ROV systems with cutting-edge inspection software, and Vertech's marine class teams we can deliver best-in-class results to our clients.

Geo Oceans' award-winning marine class technology has seen us completing diver-less and unmanned inspections including UWILDs, ballast tanks, in-water surveys, mooring chains and riser inspections across the world, driving significant safety and cost benefits.



## UAV CLASS INSPECTION

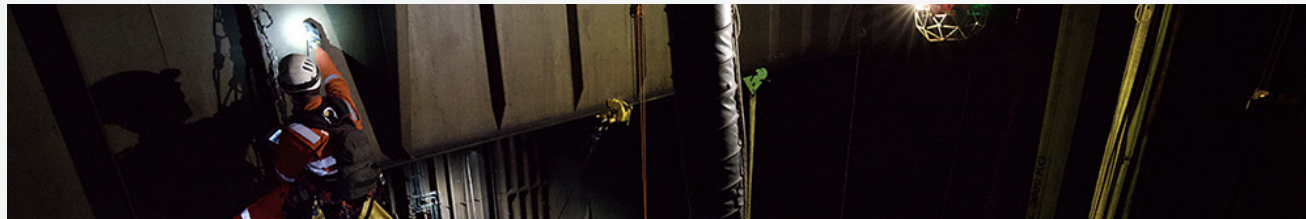
Vertech is the first company in Australia to be recognised as an approved service supplier by Lloyd's Register for UAV inspections of classification vessels and structures. Our hull inspection teams are trained to use the Flyability Elios 2 to provide both conventional rope access and UAV inspections on the same campaign driving significant safety and cost benefits.

The Flyability Elios 2 is Vertech's UAV of choice with 4K video capture allowing our hull tank inspectors and the attending surveyor to make informed decisions about the extent of the scope to be completed.



# SPECIALIST PACKAGES

## V-CLASS (CLASS INSPECTION PACKAGE)



A carefully curated package to service all of a client's class inspection needs. V-Class combines marine class planning, engineering, ROVs, UAVs, manned inspection and confined space entry management into a single end-to-end inspection package that will satisfy and exceed the standards of all class accreditation bodies.

## GO-TANK (TANK INSPECTION PACKAGE)



Our specialists from Geo Oceans can deploy ROVs to inspect tanks without the need to take them them off. When collaborating with Vertech specialist NDT arm, Sonomatic, these ROV's are also able to deploy conventional and advanced NDT tools.

## V-SAFE (CONFINED SPACE ENTRY PACKAGE)



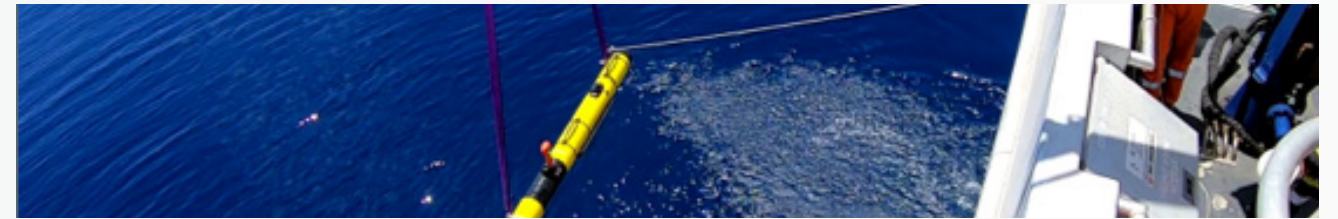
A specialised confined space entry management and working at height rescue solutions package. While Vertech prides itself on unmanned confined space entry (CSE) capabilities, in certain situations, using a highly trained professional is the only solution. Our manned CSE specialist have years of experience and are supported stringent CSE proceduree, ensure that the scope is completed safely and efficiently.

## ASPECT (JETTY INSPECTION PACKAGE)



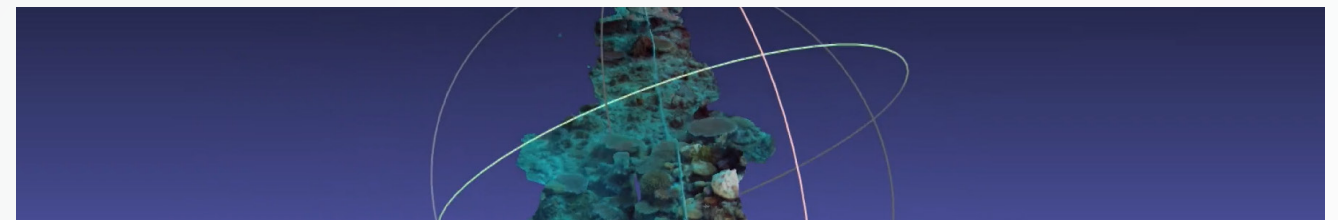
A turnkey fabric maintenance package combining specialist access and inspection systems with remediation, repair and wrap solutions for jetty underdecks, wharfs and helidecks. Our team will assess each scope individually and utilise the best access method whether is be rope access, underdecking or scissor lift barge, to save our clients time and money.

## B-SITE (SITE APPRAISAL PACKAGE)



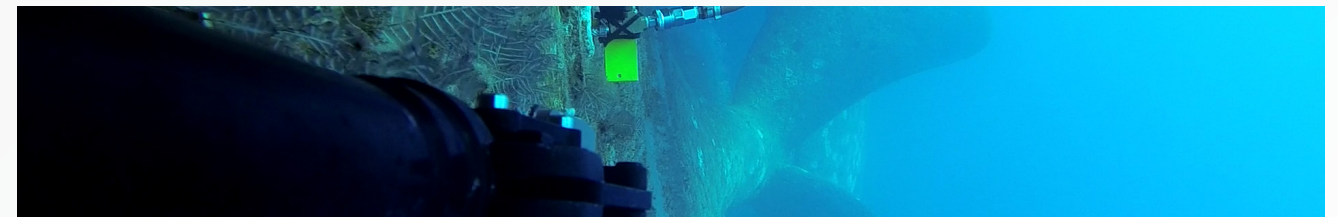
A pre-planning package focused on improving the inspection process of below-waterline marine assets. By performing metocean, hydrographic, environmental and benthic mapping survey, Blue Ocean Marine Services can give our client a better understanding of the subsea environment and more effectively conduct the required inspections.

## GO-VISIONS (ROV MARINE SCIENCE PACKAGE)



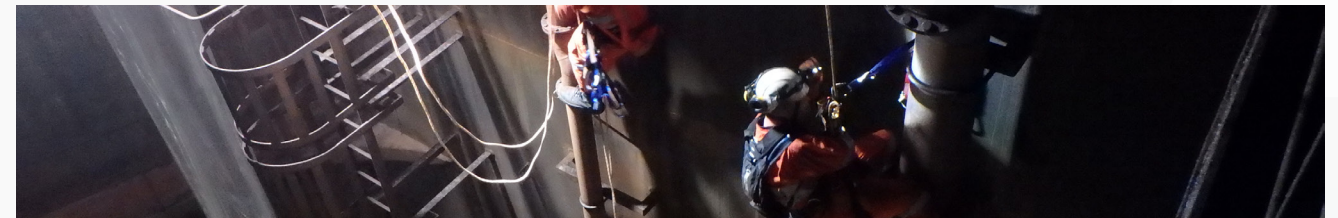
Geo Oceans' Mini-ROV systems combine with the Groups proprietary GO Visions software to create highly detailed marine habitat maps. This data along with bathymetry survey data can be used to model the subsea marine environment around an asset and assist client to monitor changes in habitat over time.

## CSS-MARINE INTEGRITY (UWILD SURVEY PACKAGE)



The Marine Department can assist clients to perform In-Water Surveys with the CCS-Marine Integrity Package. Services within this packages can include ROV NDT inspections, visual inspection and fouling cleaning. Our ROV can also be fitted with a wide range of attachments, such as Ultrasonic Thickness (UT) tooling, laser profilers or calliper tools for chain link measurements.

## V-TMP (RISER TURRET MOORING PACKAGE)



Our turret and mooring package combines our full suite of marine class and planning capabilities to safely and efficiently execute mooring and turret system integrity inspections to class requirements.



# COMBINED SERVICES

Vertech work alongside a Group of affiliated companies that together, deliver a comprehensive range of asset integrity, inspection, maintenance and specialist access services across a wide range of industries and sectors across Australia and the Asia Pacific. Our shared capabilities span project management, NDT, drone and ROV inspections, 3D modelling, specialist access and maintenance, and environmental and export infrastructure services.

**Vertech** – Experts in specialist access, NDT and inspection, maintenance, and repairs.

**Geo Oceans** – Leaders in Mini-ROV IRM and water inspection, with expertise in AUV and ASV deployment.

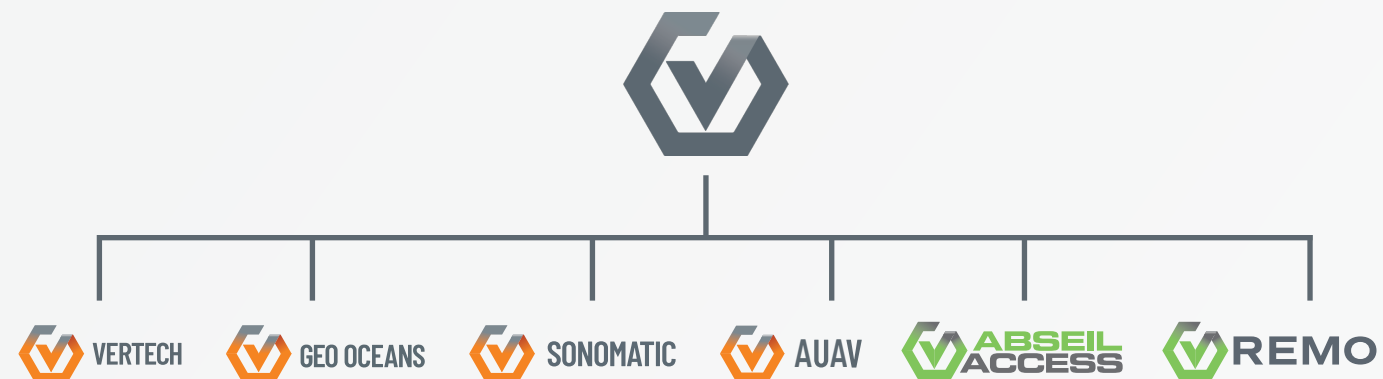
**Sonomatic** – A global leader in specialised NDT and integrity inspection solutions.

**AUAV** – Specialists in UAV, drone-based inspections, and 3D modelling.

**Remo Technical Services** – A leading supplier of turbine installation, maintenance, and inspection services.

**Abseil Access** – Specialists in bridge engineering, geotechnical slope stabilisation, rockfall protection, and rope access solutions.

Together, we deliver tailored service packages designed to meet the specific needs of each client and asset. By collaborating across our group of companies, we drive innovation, improve safety, and ensure consistent delivery of high standards across the mining and infrastructure sectors.



## OUR 4 CORE VALUES



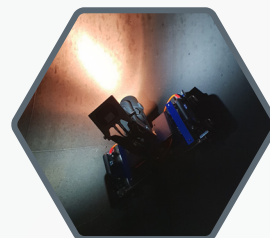
PEOPLE



SAFETY



QUALITY



INNOVATION

# CWL GROUP PARTNERS



Geo Oceans supports clients in securing environmental approvals and in the construction, development, and maintenance of marine infrastructure such as jetties, wharves, channels, harbors, and renewable energy projects, both in Australia and internationally.

Their services include designing and executing surveys and monitoring programs for benthic habitats, along with engineering inspections and intervention tasks for critical marine assets like pipelines and wharves. They specialise in remote technology solutions that enhance data quality and reduce operational risks.

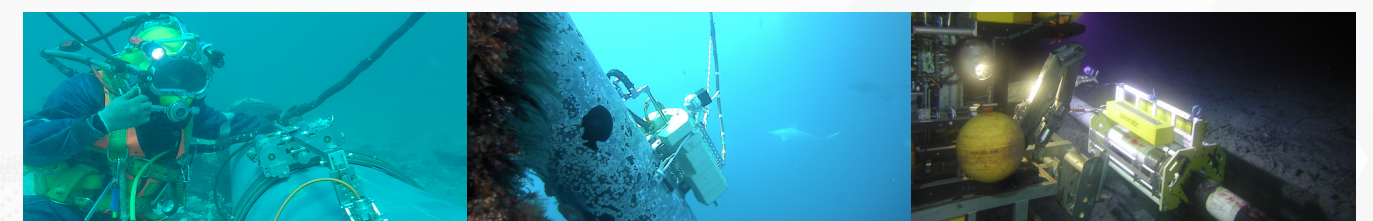
Key innovations include GO Visions™, a software and hardware suite for benthic habitat mapping and compliance monitoring, and the Mini-ROV CSS system for subsea inspections, cleaning, and light interventions. Backed by a multidisciplinary team in marine science, inspection, and engineering, Geo Oceans delivers high-value, efficient subsea survey and inspection solutions.



Sonomatic is a global expert in subsea inspection technologies, offering advanced ROV and diver-deployed robotic systems. With over 40 years of experience, the company is known for customising inspection solutions to meet specific client requirements, especially in complex offshore environments.

Pioneering innovations like Time of Flight Diffraction (TOFD) in the 1980s, Sonomatic continues to lead in non-destructive testing (NDT) with techniques such as Phased Array and Magnetic Eddy Current. Their in-house E2i engineering team designs and develops bespoke inspection tools, ensuring high performance, adaptability, and reliability in the field.

Dedicated to asset integrity management, Sonomatic provides accurate inspections that support safe, cost-effective decision-making. Their integrated services include high-quality field data and advanced statistical analysis, helping clients manage aging infrastructure and optimise asset life.



# KEY CONTACTS

## VERTECH

**Craig Davies**  
Group Development Manager  
T: +61 (8) 6168 7600 | M: +61 417 855 573  
E: Craig.Davies@vertech.com.au

**Paul Lavender**  
General Manager – Western Australia  
T: +61 (8) 6168 7600 | M: +61 417 961 016  
E: Paul.Lavender@vertech.com.au

**John Rose**  
General Manager – East Coast  
T: +61 (8) 6168 7600 | M: +61 407 047 169  
E: John.Rose@vertech.com.au

**Adam Haling**  
General Manager – Infrastructure  
T: +61 (8) 6168 7600 | M: +61 475 509 140  
E: Adam.Haling@vertech.com.au

**Stephen Brett**  
Manager – Core Contracts and  
Offshore Services (WA/NT)  
T: +61 (8) 6168 7600 | M: +61 407 818 532  
E: Stephen.Brett@vertech.com.au

**Rob Porter**  
Department Manager – Frontline and Ad Hoc  
T: +61 (8) 6168 7600 | M: +61 497 327 024  
E: Rob.Porter@vertech.com.au

## SONOMATIC

**Alex Cesan**  
General Manager – Australia and NZ  
T: +61 498 442 666  
E: Alex.Cesan@sonomatic.com.au

**Jon Millen**  
Operations Manager – Australia  
T: +61 (8) 6168 7606 | M: +61 477 030 058  
E: Jon.Millen@sonomatic.com.au

**Zach McCann**  
Region Manager – South East Asia  
T: +60 361 581 185 /1180  
M: +60 12 555 1569 / +61 404 797 670  
E: Zach.Mccann@sonomatic.com.my

## GEO OCEANS

**Nick Veitch**  
Managing Director  
T: +61 (8) 6168 7611 | M: +61 400 352 134  
E: Nick.Veitch@geoceans.com.au

**Andy Mercer**  
Operations Manager  
T: +61 (8) 6168 7611 | M: +61 410 153 060  
E: Andy.Mercer@geoceans.com.au

