

CAPABILITY STATEMENT

UPSTREAM DRILLING

THE PURPOSE

This document is composed to assist our clients and the supply chain to understand our group operating structure along with a high-level understanding of the benefits, services and specialist packages associated with our upstream drilling capabilities.



VERITECH



WHO WE ARE



Vertech provides specialised in-service inspection services across various industries, ensuring the integrity and safety of critical assets. We deliver Non-Destructive Testing (NDT) solutions to support companies managing assets and infrastructure in diverse sectors. Our expertise extends to offering advanced access systems and inspection services for maintenance, upgrades, repairs, and remediation projects.

UPSTREAM

Vertech has a wealth of experience in supporting the upstream drilling market, having serviced the majority of offshore drill rigs in the Asia Pacific region for over a decade. We completely understand the specific challenges and drivers faced, and as such have tailored our approach to ensure minimal impact to drilling operations while providing a safe, high-performing and cost-effective service that is compliant with the statutory requirements.

A drilling campaign and its contractors require speed, efficiency and high-quality. Vertech prides itself on its ability to meet these needs by utilising; a workforce strategically located across the globe, an experienced project management team and innovative technology. These elements combined, guarantee our clients achieve a best-in-class outcome.



GROUP ACCREDITATIONS

ISO 9001: 2015

ISO 14001:2015

ISO 29001:2010

ISO 45001:2018

ABS Hull Gauging Firm

ABS Approved Supplier for UAV

ABS Remote Inspection Techniques (ROV)

BV Remote Inspection Techniques

BV Thickness Measurements of Hull Structures

DNV Close up Survey

DNV NDT on Classification Projects

DNV Thickness Measuring

DNV in-Water Survey (ROV)

Vertech IRATA Operator

Lloyds Register Remote Inspection Techniques (UAV)

Lloyds Register Remote Inspection Techniques (ROV)

LR Thickness Measurements of Hull Structure

NATA Lifting and Lifted Inspection

NATA Pressure Vessel Inspection

NATA NDT Inspection

SPECIALIST PACKAGES



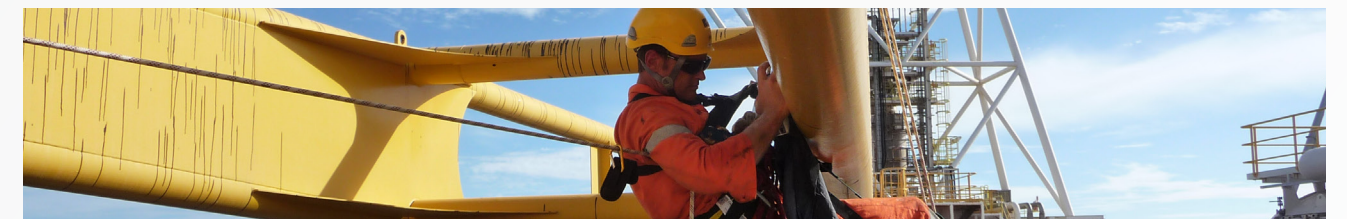
V-DROPS (DROPPED OBJECTS PACKAGE)

A detailed and comprehensive dropped object inspection, management and prevention package including identification, recommendations and reliable securing and ongoing management. Effective DROPS management is critical to ensuring the safety of the drill crew and facility.



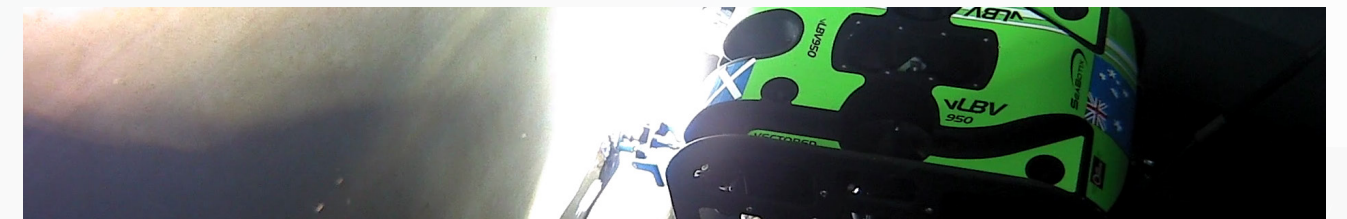
EYE-FLY (ACCREDITED UAV PACKAGE)

As the first company in the Asia Pacific to achieve both the ABS and LR accreditation for unmanned aerial Vehicle (UAV) inspections we are able to offer a comprehensive array of visual inspections be it on a crane, Derrick structure or jack up leg inspection to remove working at height, conduct period inspections of potential DROPS or as part of a full Class Survey or part of a Special Periodic Survey.



V-LIM (LGI MANAGEMENT PACKAGE)

Vertech provides a world leading lifting equipment and drill handling tool inspection and management package. We combine high quality, multi-disciplined inspectors, a custom-built inspection and integrity management system (Viiper), the latest inspection and access systems with an experienced and customer focused projects team to ensure our drilling customers have a responsive end to end service to save cost, increase efficiency and drive safety excellence.



MODUWILD - SPECIAL SURVEY PACKAGE

Our multi-disciplined and high mobility IRATA Accredited inspectors are some of the most experienced in the Asia Pacific at conducting inspections of marine structures as part of class and special survey requirements. Our package includes accreditation for NATA for NDT, ABS, DNV, Lloyds register for class as ABS and LR for Unmanned Aerial Vehicle (UAV) and Remotely Operated Vehicles (ROV).

UPSTREAM DRILLING SERVICES

LIFTING INTEGRITY, TESTING AND MANAGEMENT

Our multi-disciplined teams can provide inspections, repairs and maintenance services to offshore lifting equipment across the Asia Pacific drilling fleet. Inspections are conducted to API RP 2D, manufacturer recommendations and/or class requirements ensuring crane structures, hoisting and lifting equipment inspection and ancillaries are safe, reliable and compliant to statutory requirements.

We can also work with clients to implement a framework of processes to effectively manage the administrative burden and gaps usually encountered in effective lifting gear management.

CLASS AND SPECIAL SURVEY

Vertech's Marine Department comprises of a dedicated team of office and site-based professionals who specialise in the statutory inspections for the classification of mobile offshore drilling units (MODU). We can provide a best-in-class delivery of Special Periodic Surveys (SPS) or Hull Preservation Surveys (HPS).

PRESSURE PIPEWORK

Vertech provides a comprehensive in-service inspection of drilling asset pressure systems. We actively reduce both risk and cost to keep people safe, meet statutory and legislative requirements and ensure un-interrupted drilling operations.

NON-DESTRUCTIVE TESTING

Non-Destructive Testing (NDT) involves detecting and assessing flaws in materials without causing damage. Vertech has a wealth of NDT experience in the drilling market and can provide recommendations and solutions to ensure compliance to international standards.

DROPS PROGRAMMES

Dropped Objects Prevention Schemes (DROPS) assist clients to identify dropped object risks; conduct corrective actions such as reliable securing, removing or remediating the potential risk; and provide detailed risk or zone based categorisations for future inspections.

MAINTENANCE

INSPECTION



MECHANICAL AND FITTING

Underpinned by our range of access services, we provide multi-disciplinary mechanical teams to complete high mobility maintenance, upgrade, repair, or remediation services to our drilling customers.

HAZARDOUS AREA INSPECTION

We can provide end-to-end project solutions including engineering design and technical support, product sourcing and procurement, installation and repair, and personnel contracting services. Our upstream drilling customers usually draw upon services including Ex hazardous area inspections, testing, compliance, installations and general electrical maintenance.

PAINTING AND BLASTING

Our team are on hand to keep the rig looking the part during ongoing drilling campaigns and ensure the longevity of the structure. We provide a high mobility painting and blasting service using single coat marine coating systems, insulation repairs and a range of composite wrap services.

DERRICK SURVEYS

Our Derrick surveys are completed to Category I to Category IV requirements in accordance with API RP 4G. Our multi-disciplined teams take a "find and fix" approach while conducting these surveys to reduce risk to the drill crew and minimise future corrective actions within our reports.

ACCESS MANAGEMENT

Vertech was a pioneer of rope access in Australia. We imported the first decking systems to the Asia Pacific region and designed and installed the first offshore safety netting and tension netting systems in Australia. Our highly experienced team has installed scaffolding and custom access platforms on oil and gas sites across the country.

WELDING AND BOILER MAKING

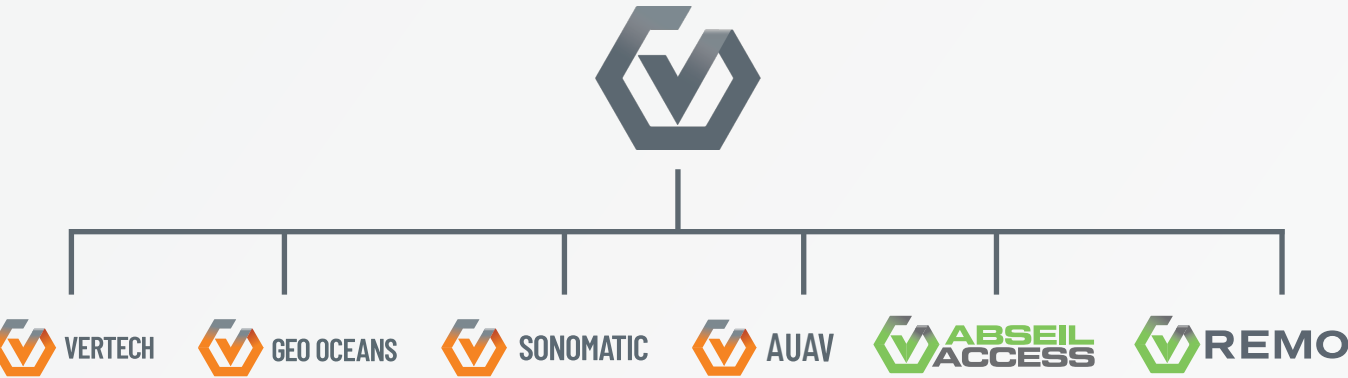
The Vertech team utilise the latest in welding and boiler making techniques to repair and maintain our client's boilers, pressure vessels and other storage assets.

COMBINED SERVICES

Vertech work alongside a Group of affiliated companies that together, deliver a comprehensive range of asset integrity, inspection, maintenance and specialist access services across a wide range of industries and sectors across Australia and the Asia Pacific. Our shared capabilities span project management, NDT, drone and ROV inspections, 3D modelling, specialist access and maintenance, and environmental and export infrastructure services.

- Vertech** – Experts in specialist access, maintenance, and repairs.
- Geo Oceans** – Leaders in Mini-ROV IRM and water inspection, with expertise in AUV and ASV deployment.
- Sonomatic** – A global leader in specialised NDT and integrity inspection solutions.
- AUAV** – Specialists in UAV, drone-based inspections, and 3D modelling.
- Remo Technical Services** – A leading supplier of turbine installation, maintenance, and inspection services.
- Abseil Access** – Specialists in bridge engineering, geotechnical slope stabilisation, rockfall protection, and rope access solutions.

Together, we deliver tailored service packages designed to meet the specific needs of each client and asset. By collaborating across our group of companies, we drive innovation, improve safety, and ensure consistent delivery of high standards across the mining and infrastructure sectors.



OUR 4 CORE VALUES



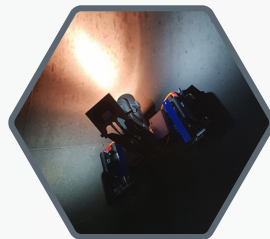
PEOPLE



SAFETY



QUALITY



INNOVATION

GROUP SUMMARY



Geo Oceans is an award winning subsea services provider delivering innovative and disruptive ROV inspection solutions to a global client base. We specialise in developing and deploying small ROV systems and subsea robotics directly from assets or vessels of opportunity to provide clients with reliable, safe, low carbon and low cost solutions for managing subsea asset integrity. We are also experts in the planning and execution of offshore surveys, using autonomous survey vehicles (AUV).



Sonomatic specialise in the design, development and application of Non-Destructive Testing (NDT) inspections. Since the company’s formation in the 1980s, we have combined these NDT processes with integrity engineering capabilities to provide fully integrated inspection packages that directly meet the needs of the client.

Bringing innovative bespoke inspection solutions to the market through in-house development of equipment, software and robotics, Sonomatic resides as the global leader for ROV-deployed subsea inspection and Non-Intrusive Inspection (NII) technologies.



AUAV is a drone service provider established in 2013. We offer topographical surveys, LiDAR, inspection, 3D modelling, and bespoke projects. Our team are full-time employees, ensuring quality control. Our proprietary inSite data solution provides consulting, capture, and hosting. We’re a top 20 drone service provider globally, certified by the Australian Civil Aviation Safety Authority and insured.



REMO Technical Services specialises in turbine installation, maintenance, and inspection. We offer a managed solution based on extensive experience in wind and renewable energy building on their reputation established through successful wind turbine installation and commissioning projects across Europe.



Abseil Access has supplied industry-leading services including bridge design, bridge engineering and construction, Geotechnical slope stabilisation and rockfall protection, conservation, and rope access services across a multitude of sectors since 1992. In that time, the Abseil Access team have come to understand the frequently encountered challenges our customers face and how we can provide maximum value. Our offices are located in Wellington, Christchurch, Nelson, and New Plymouth to support operations in even the most remote parts of New Zealand.

KEY CONTACTS

VERTECH

Craig Davies
Group Development Manager
T: +61 (8) 6168 7600 | M: +61 417 855 573
E: Craig.Davies@vertechgroup.com.au

Paul Lavender
General Manager – Western Australia
T: +61 (8) 6168 7600 | M: +61 417 961 016
E: Paul.Lavender@vertechgroup.com.au

John Rose
General Manager – East Coast
T: +61 (8) 6168 7600 | M: +61 407 047 169
E: John.Rose@vertechgroup.com.au

James Grant
General Manager – Northern Territory
T: +61 (0) 455 255 202
E: James.Grant@vertechgroup.com.au

Adam Haling
General Manager – Infrastructure
T: +61 (8) 6168 7600 | M: +61 475 509 140
E: Adam.Haling@vertechgroup.com.au

Donovan Rheeders
Department Manager – Oil and Gas
T: +61 (8) 6168 7600 | M: +61 439 110 880
E: Donovan.Rheeders@vertechgroup.com.au

Rob Porter
Department Manager – Frontline and Ad Hoc
T: +61 (8) 6168 7600 | M: +61 497 327 024
E: Rob.Porter@vertechgroup.com.au

SONOMATIC

Alex Cesan
General Manager – Australia and NZ
T: +61 498 442 666
E: Alex.Cesan@sonomatic.com.au

Zach McCann
Region Manager – South East Asia
T: +60 12 555 1569 | M: +61 404 797 670
E: Zach.Mccann@sonomatic.com.my

Jon Millen
Operations Manager – Australia
T: +61 (8) 6168 7606 | M: +61 477 030 058
E: Jon.Millen@sonomatic.com.au

GEO OCEANS

Nick Veitch
Managing Director
T: +61 (8) 6168 7611 | M: +61 400 352 134
E: Nick.Veitch@geoceans.com.au

Andy Mercer
Operations Manager
T: +61 (8) 6168 7611 | M: +61 410 153 060
E: Andy.Mercer@geoceans.com.au

AUAV

James Rennie
Managing Director
T: 1300 738 521 | M: +61 497 070 576
E: James.Rennie@auav.com.au

Jamie Holyoak
General Manager
T: 1300 738 521 | M: +61 473 136 614
E: Jamie.Holyoak@auav.com.au

Barry Nixon
Operations Manager – UK
T: +44 (0) 1224 823960
E: Barry.Nixon@auav.co.uk

Luke Campbell
Operations Manager – Western Australia
T: 1300 738 521 | M: +61 467 677 886
E: Luke.Campbell@auav.com.au

REMO

Russell Bell
Managing Director
T: +61 7 3361 0612 | M: +61 429 540 606
E: Russell.Bell@remo-ts.com

ABSEIL ACCESS

Alex Whilmshurst
General Manager
T: +64 27 488 2849
E: Alex.Wilmshurst@abseilaccess.co.nz