

# SPECIALIST PACKAGE

---

## REMOTE DIGITAL VISUAL INSPECTION (RDVI)

### THE PURPOSE

This document is composed to assist our clients and the supply chain in understanding our group operating structure and a high-level understanding of the benefits, services, key people, and equipment associated with our world-leading Remote Digital Visual Inspection and Robotic Services.



# VERITECH





# RDVI SOLUTIONS

The Vertech RDVI Division, in collaboration with Geo Oceans, Sonomatic and AUAV, is the amalgamation of cutting-edge technology, multi-skilled site-based crews and a technically experienced management team. This strong foundation has allowed us to become the pathfinders of this emerging industry, setting the standard for others who follow.

Our multi-company staff expect excellence from themselves and each other, which has led to the RDVI team being known throughout the industry as the service provider of choice. Across the whole of Vertech Group, we pride ourselves on executing and delivering high-profile, technically challenging scopes due to our commitment to innovation, the best people and our absolute client focus.

## OUR ADVANCED RDVI

RDVI is the use and application of Remote Digital Visual Inspection systems to internally inspect equipment without the need for Confined Space Entry (CSE).

RDVI methods are ideal for In-Service Inspections, conditional assessments, process efficiency assessments, and removing or retrieving debris and foreign objects in various systems. Vertech's RDVI experience and understanding of the industry have led us to create advanced RDVI specialist packages. These complete, integrated, and pre-planned packages deliver a higher level of data and a more comprehensive service. The results can be used for statutory equipment sign-off in the field and post-inspection analysis, risk reviews, and process operational requirements.

What makes these Advanced-RDVI specialist packages unique is the 60+ years of experience and expertise behind them. Each package was created by experts who intimately understand the tasks required, solving potential issues before they arise. This ensures your inspections are completed with the highest level of integrity and are repeatable for future comparative purposes.



# RDVI SOLUTIONS

## RDVI SPECIALISED ENGINEERING SERVICES

INCREASED SAFETY BY REDUCING PERSONNEL EXPOSURE	REDUCTION OF SHUTDOWN RESOURCE REQUIREMENTS	IMPROVED INSPECTION REPEATABILITY
REDUCTION IN OVERALL RISK PROFILES	INCREASED INSPECTION COVERAGE	REDUCTION IN POTENTIAL LEAK POINTS

# ENSURING SAFETY EXCELLENCE ACROSS ALL PROJECTS





# RDVI SERVICES

Remote Digital Visual Inspection or RDVI is the application of remote digital systems such as cameras, robots or crawlers to inspect internally and asses challenging access areas without the need for intrusive inspections and the associated Confined Space Entry. RDVI methodologies work for condition assessment, process efficiency assessments and Foreign Object Search And Retrieval (FOSAR).

## RDVI SPECIALISED ENGINEERING SERVICES

### FRONT END ENGINEERING DESIGN (FEED)

Our RDVI team collaborates with our clients during the FEED and planning phase of a project to define critical asset areas where RDVI can be applied, what will be required to access these areas, and the likely degradation mechanism.

RDVI integration in the Pre-FEED and FEED stages of the project maximises RDVI capabilities and results in the most significant savings, exceptional inspection coverage, a reduction in turnaround time frames and fewer resource requirements. This process also dramatically reduces the possibility of substantial changes being required during the execution phase.

### OPERATIONAL PLANNING AND REVIEW

Vertech's Facility Review and Planning service provides clients with focused campaign planning for the internal inspection requirements of pressure equipment. Our processes ensure that the correct inspection equipment, support tooling and techniques are applied promptly and efficiently.

We have taken full advantage of our team's extensive campaign and project experience to create a specialised array of procedures and methods to help reduce execution windows, bringing assets back online faster.

## RDVI SPECIALISED SITE EXECUTION SERVICES

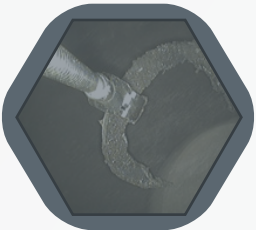
### ONSITE EXECUTION SERVICES

Vertech's Campaign Execution Team provides complete end-to-end assistance with campaigns, projects and turnarounds. Our RDVI technicians have a wide variety of inspection experience. They are trained explicitly across the full suite of RDVI technologies, allowing them to assess each situation and apply the correct tooling on a case-by-case basis.

What sets Vertech's RDVI Team apart is that our experts understand the needs of various stakeholder groups, from onsite personnel to upper management. Our team works with each group every step of the way to help them understand and interpret the relevant data, results, and information.

# RDVI SPECIALIST PACKAGES

Vertech offers the latest generation RDVI systems and the very best people in Asia Pacific. The equipment and supporting tooling we use have been custom-designed and fabricated to suit specific requirements within each sector to ensure a best-in-class outcome and safety excellence on all projects we undertake.



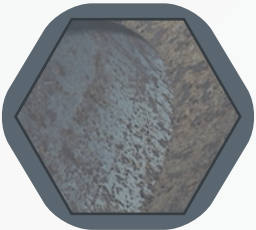
### FOREIGN OBJECT SEARCH AND RETRIEVAL (FOSAR)

Vertech employs a suite of off-the-shelf and custom-built tooling systems to remove items of foreign debris found during an inspection without costly CSE and to ensure the ongoing integrity of the client's plant and process.



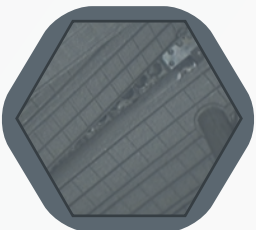
### RDVI IN-FIELD INSPECTION

Vertech's In-Field Inspection execution team works alongside statutory and class societies to assess and record the condition of an asset without the need for CSE. Our technicians have an extensive track record in this area and can draw on their experience to complete inspections efficiently, even when limited inspection data is available.



### BASELINE, COMPLETIONS, CLOSE UP AND QA/QC

Our QA/QC RDVI package builds upon the best practice principles of conventional QA/QC inspections, using RDVI technology to identify items of pressure equipment that have been constructed out of specification, with any damage or anomalies.



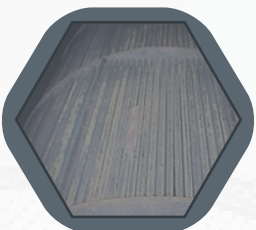
### PROCESS EFFICIENCY

Vertech engineers will work with our clients to evaluate critical areas of a plant's processes and identify potential issues and points of failure. Our team has the knowledge to identify the key indicators when critical regions of the plant process are upset.



### CONDITIONAL MONITORING

The RDVI Conditional Monitoring package assists our clients in monitoring specific degradation issues. Using specialised tooling and procedures that are developed in-house, we can ensure that the target areas are assessed in the same way each time, in the most efficient manner possible. Our analysis experts can then collate, compare and evaluate these inspection results to ensure reproducibility.



### HYDROCARBON ENRICHED ATMOSPHERE INSPECTIONS

Vertech has developed dedicated and specialised procedures, equipment and tooling to inspect pressure equipment and piping systems. By using RDVI, these hydrocarbon-enriched atmospheres do not have to be purged, saving our clients time and money.

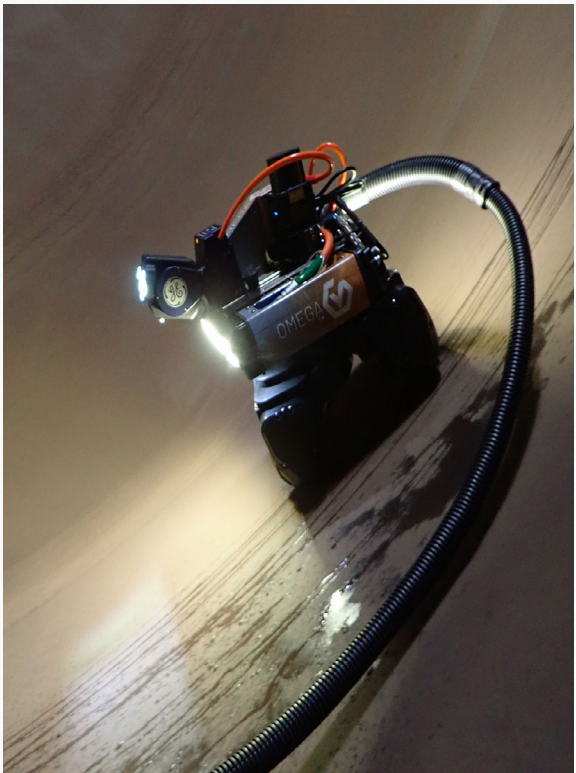
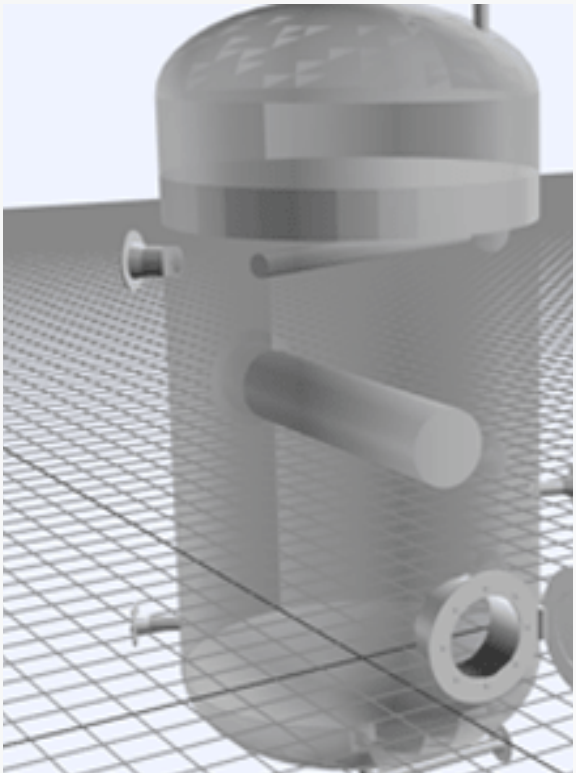


# OUR TEAM

You need the right people with the proper training to get results. Vertech is proud to have the world's most experienced RDVI technicians as part of their team, ensuring that you get an accurate outcome the first time, every time.

Our team of specialists have in-field execution experience and are equipped with an extensive range of proprietary equipment. They can offer an integrated execution and inspection approach that meets the requirements of your engineers, planners and statutory inspectors, helping you get results even when your contracted day-to-day resources are stretched.

Our extensive recruiting process requires each applicant to display skills across a wide range of areas in the initial stage before progressing. Our RDVI-specific training program fully prepares our team for the field by educating them in six areas: systematic inspection procedures, degradation identification, tooling identification competency, tooling application competency, process optimisation training, and safety training.



With our team's vast experience, we bring more to every inspection. Drawing upon the years of global expertise on degradation and operational issues allows us to help you further reduce risk and increase your confidence in operating the plant reliably and safely.

## TO GET THE RIGHT RESULTS, YOU NEED THE RIGHT PEOPLE

### SYSTEM INSPECTION PROCEDURES

RDVI technicians are trained in systematic inspection procedures to enable higher levels of coverage, record, secure and prepare data in a logical format for communication, and correctly perform the post-inspection review processes.

### DEGRADATION IDENTIFICATION

Our team has been trained in degradation identification and detection utilising 2D imagery. This is important as technicians must know what they are looking at to capture all relevant data.

### TOOLING IDENTIFICATION COMPETENCY

Vertech technicians are trained across a range of digital camera systems, so they know what camera is required and why, how to set it up correctly and what specific lenses need to be applied to get the best results.

### TOOLING APPLICATION COMPETENCY

Our team is trained in using and applying specialist support tooling that we design and build to ensure cameras are placed in the correct focal ranges, giving the most transparent view of possible degradation.

### PROCESS OPTIMISATION TRAINING

Vertech RDVI technicians are trained in process and operational aspects to ensure they can detect and highlight indications of process reliability, helping your functional team run your facility at the highest efficiency.

### SAFETY TRAINING

Our team has been trained to safely use, operate, and get equipment into high-level work environments without causing sim-ops conflicts, incidents, or accidents.



# CASE STUDIES

To understand more about our full capability, services, and specialist packages and how these can drive safety, quality and cost efficiencies for your asset or challenges, we've made our case studies accessible via our website.

## BEACH ENERGY TURNAROUND



Vertech proudly supported Beach Energy Australia's recent ventures into using remote digital visual inspection (RDVI) services. The team delivered multiple scopes of work within the original budget, safely, and with high-quality inspection data.

## INPEX ICHTHYS TURNAROUND



Over two years, Vertech reviewed every item of equipment scheduled for internal inspection of pressure equipment to determine suitability and applicable inspection tooling. They developed an execution strategy for remote visual inspection, provided all RDVI teams for three facilities, and worked with other inspection service personnel to achieve INPEX inspection goals.

## SANTOS GLNG SHUTDOWN



The Santos shutdown involved a review of pressure systems to determine suitable inspection tooling. Comprehensive execution plans were developed for each asset, and specialised equipment was mobilised with highly skilled crews to complete all inspection requirements safely, on time, and to a high standard.

## BAROSSA AND SCARBOROUGH FEED REVIEWS



Vertech conducted an RDVI review of Barossa and Scarborough Facilities during their design phase. Pressure equipment was examined, resulting in recommendations for dedicated RDVI nozzles. Vertech and Sonomatic collaborated to compile a service package for Greenfield facilities to assist in engineering and designing requirements for inspection without confined space entry.

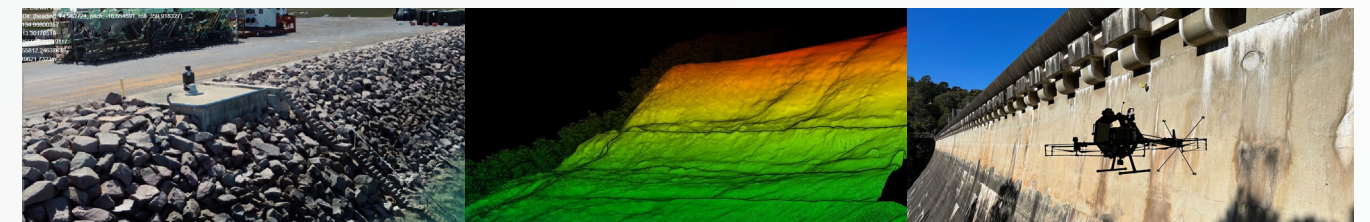
# GROUP PARTNERS



AUAV is a leading Australian drone solutions provider, established in 2013 and recognised globally among the top 20 drone service companies. The team delivers high-precision topographic surveys, LiDAR and 3D modelling, infrastructure inspections, and tailored aerial data solutions. All operations are carried out by full-time, CASA-certified professionals, ensuring consistent quality, safety, and reliability—backed by full insurance coverage.

As part of its advanced inspection offering, AUAV provides Remote Digital Visual Inspection (RDVI) services using state-of-the-art drones and confined space technologies. These solutions enable internal inspections of hard-to-access or hazardous areas without the need for intrusive methods or confined space entry, enhancing safety and reducing downtime.

AUAV's proprietary inSite platform supports an end-to-end digital workflow—combining technical consulting, aerial and internal data capture, cloud-based processing, and secure, interactive data hosting. This empowers clients to visualise, monitor, and act on spatial insights with confidence. Supporting infrastructure, mining, energy, utilities, and construction sectors, AUAV delivers scalable and flexible solutions for complex projects across Australia and abroad.



Sonomatic specialises in the design, development, and application of specialised and advanced NDT inspections, and combines this with cutting-edge integrity engineering and subsea engineering capabilities to provide clients with a world-class inspection service. Sonomatic is the global market leader in ROV-deployed subsea inspection, advanced and Specialised NDT, and Non-Intrusive Inspection (NII) technologies. Through our in-house E2i R&D engineering division, we develop custom-made inspection equipment, integrity software solutions, and robotic systems.

Sonomatic enhances RDVI services through using these expertise. By combining RDVI with advanced NDT techniques and integrity assessment capabilities, Sonomatic ensures higher inspection coverage, reduced risk, and more informed decision-making for asset integrity.



# KEY CONTACTS

## VERTECH

### Adam Haling

Commercial Manager

T: +61 (8) 6168 7600 | M: +61 475 509 140

E: Adam.Haling@vertechgroup.com.au

### Craig Davies

Group Development Manager

T: +61 (8) 6168 7600 | M: +61 429 222 409

E: Craig.Davies@vertechgroup.com.au

### Bruce McKenzie

Department Manager - Integrity and Inspection

T: +61 (8) 6168 7600 | M: +61 487 473 713

E: Bruce.Mckenzie@vertechgroup.com.au

### Donovan Rheeders

Department Manager - Projects and Shutdowns

T: +61 (8) 6168 7600 | M: +61 439 110 880

E: Donovan.Rheeders@vertechgroup.com.au

### Rob Porter

Department Manager - Frontline and Ad Hoc

T: +61 (8) 6168 7600 | M: +61 497 327 024

E: Rob.Porter@vertechgroup.com.au

### Company Contact Information

T: +61 (8) 6168 7600

E: Info@vertechgroup.com.au

## SONOMATIC

### Alex Cesan

General Manager - Australia and NZ

T: +61 498 442 666

E: Alex.Cesan@sonomatic.com.au

### Esteban Cesan

General Manager - Americas

T: +1 832 977 0303

E: Esteban.Cesan@sonomatic.com

### Zach McCann

Region Manager - South East Asia

T: +60 12 555 1569 | M: +61 404 797 670

E: Zach.Mccann@sonomatic.com.my

### Clayton Webb

Region Manager - Middle East

T: +9712 6580708 | M: +971 50 313 9254

E: Clayton.Webb@sonomatic.com

### Graham Marshall

Subsea Project Manager - Europe and Africa

T: +44 (0) 1224 823 960

E: Graham.Marshall@sonomatic.com

### Charles Loader

General Manager - Europe and Africa

T: +44 (0) 1925 414000 | M: +44 (0) 7376 714765

E: Charles.Loader@sonomatic.com

## AUAV

### James Rennie

Managing Director

T: 1300 738 521 | M: +61 497 070 576

E: James.Rennie@auav.com.au

### Jamie Holyoak

General Manager

T: 1300 738 521 | M: +61 473 136 614

E: Jamie.Holyoak@auav.com.au

### Travis Marshall

Business Development Manager

T: 1300 738 521 | M: +61 497 553 404

E: Travis.Marshall@auav.com.au