

SPECIALIST PACKAGE

REMOTE DIGITAL VISUAL INSPECTION (RDVI)

THE PURPOSE

This document has been prepared to provide our clients and the supply chain with a high-level understanding of the technical capabilities, benefits and services associated with our world-leading Remote Digital Visual Inspection and Robotic services.



VERITECH



RDVI SOLUTIONS

The Vertech Remote Digital Visual Inspection (RDVI) Division, in collaboration with Sonomatic and AUAV, is the amalgamation of cutting-edge technology, multi-skilled site-based crews and a technically experienced management team. This strong foundation has allowed us to become the pathfinders of this emerging industry, setting the standard for others who follow.

Our multi-company staff expect excellence from themselves and each other, which has led to the RDVI team being known throughout the industry as the service provider of choice. Across the whole of Vertech Group, we pride ourselves on executing and delivering high-profile, technically challenging scopes due to our commitment to innovation, the best people and our absolute client focus.

OUR ADVANCED RDVI

RDVI is the use and application of Remote Digital Visual Inspection systems to internally inspect equipment without the need for Confined Space Entry (CSE).

RDVI methods are ideal for In-Service Inspections, conditional assessments, process efficiency assessments, and removing or retrieving debris and foreign objects in various systems. Vertech's RDVI experience and understanding of the industry have led us to create advanced RDVI specialist packages. These complete, integrated, and pre-planned packages deliver a higher level of data and a more comprehensive service. The results can be used for statutory equipment sign-off in the field and post-inspection analysis, risk reviews, and process operational requirements.

What makes these Advanced-RDVI specialist packages unique is each package can be crafted and tailored to suit specific project needs and requirement depending on the requirement and life cycle of the project. This ensures your inspections are completed with the highest level of integrity and are repeatable for future comparative purposes.



RDVI SPECIALISED ENGINEERING SERVICES

INCREASED PRODUCTION TIME /
OPERATION TIME FOR FACILITIES

REDUCTION OF SHUTDOWN
RESOURCE REQUIREMENTS

IMPROVED INSPECTION
REPEATABILITY

REDUCTION IN OVERALL RISK
PROFILES

INCREASED
INSPECTION COVERAGE

REDUCTION IN POTENTIAL
LEAK POINTS

ENSURING SAFETY EXCELLENCE ACROSS ALL PROJECTS



RDVI SPECIALIST PACKAGES

Remote Digital Visual Inspection or RDVI is the application of remote digital systems such as cameras, robots or crawlers to inspect internally and assess challenging access areas without the need for intrusive inspections and the associated Confined Space Entry. RDVI methodologies work for condition assessment, process efficiency assessments and Foreign Object Search And Retrieval (FOSAR).

RDVI SPECIALISED ENGINEERING PACKAGES

FRONT END ENGINEERING DESIGN (FEED)

Our RDVI team collaborates with our clients during the FEED and planning phase of a project to define critical asset areas where RDVI can be applied, what will be required to access these areas, and the likely degradation mechanism.

RDVI integration in the Pre-FEED and FEED stages of the project maximises RDVI capabilities and results in the most significant savings, exceptional inspection coverage, a reduction in turnaround time frames and fewer resource requirements. This process also dramatically reduces the possibility of substantial changes being required during the execution phase.

OPERATIONAL PLANNING AND REVIEW

Vertech's Facility Review and Planning service provides clients with focused campaign planning for the internal inspection requirements of pressure equipment. Our processes ensure that the correct inspection equipment, support tooling and techniques are applied promptly and efficiently.

We have taken full advantage of our team's extensive campaign and project experience to create a specialised array of procedures and methods to help reduce execution windows, bringing assets back online faster.

RDVI SPECIALISED SITE EXECUTION PACKAGE

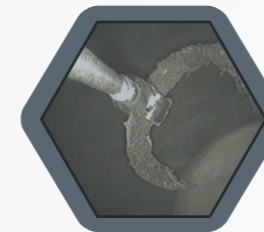
ONSITE EXECUTION SERVICES

Vertech's Campaign Execution Team provides complete end-to-end assistance with campaigns, projects and turnarounds. Our RDVI technicians have a wide variety of inspection experience. They are trained explicitly across the full suite of RDVI technologies, allowing them to assess each situation and apply the correct tooling on a case-by-case basis.

What sets Vertech's RDVI Team apart is that our experts understand the needs of various stakeholder groups, from onsite personnel to upper management. Our team works with each group every step of the way to help them understand and interpret the relevant data, results, and information.

RDVI SERVICES

Vertech offers industry leading equipment suitable for the tasks required and some of the very best people in Asia Pacific. The equipment and supporting tooling we use have been custom-designed and fabricated to suit specific requirements within each sector to ensure a best-in-class outcome and safety excellence on all projects we undertake.



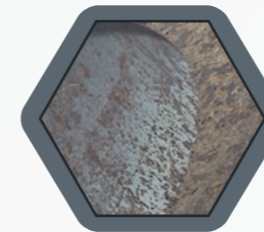
FOREIGN OBJECT SEARCH AND RETRIEVAL (FOSAR)

Vertech employs a suite of off-the-shelf and custom-built tooling systems to remove items of foreign debris found during an inspection without costly CSE and to ensure the ongoing integrity of the client's plant and process.



RDVI IN-FIELD INSPECTION

Vertech's In-Field Inspection execution team works alongside statutory and class societies to assess and record the condition of an asset without the need for CSE. Our technicians have an extensive track record in this area and can draw on their experience to complete inspections efficiently, even when limited inspection data is available.



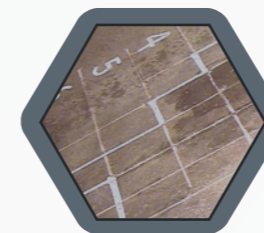
BASELINE, COMPLETIONS, CLOSE UP AND QA/QC

Our QA/QC RDVI package builds upon the best practice principles of conventional QA/QC inspections, using RDVI technology to identify items of pressure equipment that have been constructed out of specification, with any damage or anomalies.



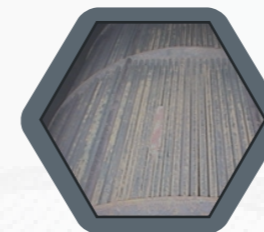
PROCESS EFFICIENCY

Vertech engineers will work with our clients to evaluate critical areas of a plant's processes and identify potential issues and points of failure. Our team has the knowledge to identify the key indicators when critical regions of the plant process are upset.



CONDITIONAL MONITORING

The RDVI Conditional Monitoring package assists our clients in monitoring specific degradation issues. Using specialised tooling and procedures that are developed in-house, we can ensure that the target areas are assessed in the same way each time, in the most efficient manner possible. Our analysis experts can then collate, compare and evaluate these inspection results to ensure reproducibility.



HYDROCARBON ENRICHED ATMOSPHERE INSPECTIONS

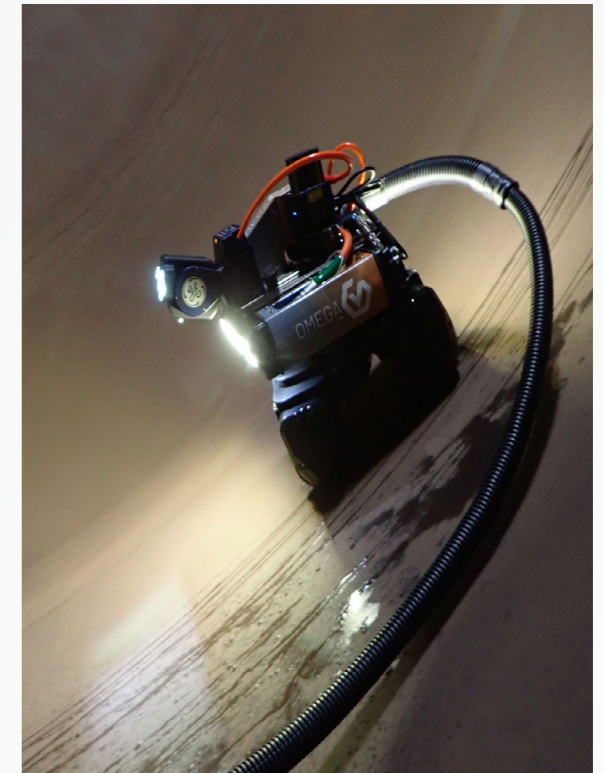
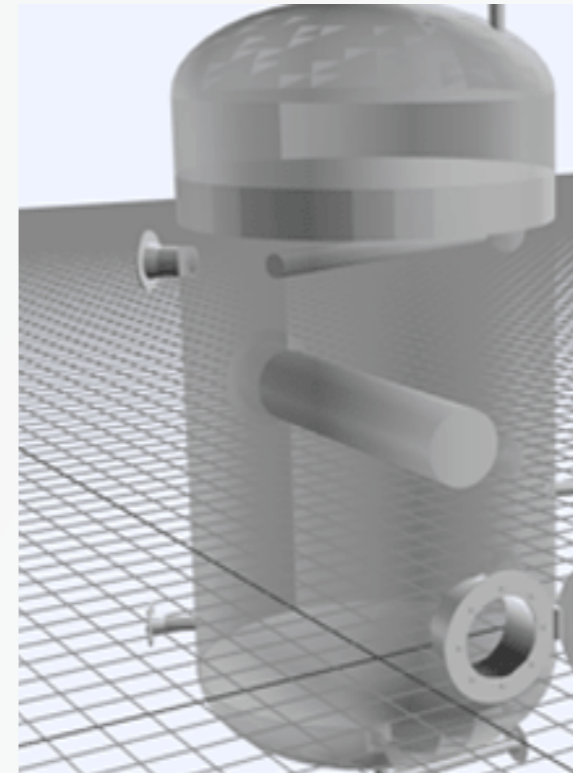
Vertech has developed dedicated and specialised procedures, equipment and tooling to inspect pressure equipment and piping systems. By using RDVI, these hydrocarbon-enriched atmospheres do not have to be purged, saving our clients time and money.

OUR TEAM

You need the right people with the proper training to get results. Vertech is proud to have some of the world's most experienced RDVI technicians as part of their team, ensuring that you get an accurate outcome the first time, every time.

Our team of specialists have in-field execution experience and are equipped with an extensive range of proprietary equipment. This offers an integrated execution approach and inspection approach that meets the requirements of your engineers, planners and statutory inspectors, helping you get results even when your contracted day-to-day resources are stretched.

Our extensive recruiting process requires each applicant to display skills across a wide range of areas in the initial stage before progressing. Our RDVI-specific training programme fully prepares our team for the field by educating them in six areas: systematic inspection procedures, degradation identification, tooling identification competency, tooling application competency, process optimisation training, and safety training.



With our team's vast experience, we bring more to every inspection. Drawing upon the years of global expertise on degradation and operational issues allows us to help you further reduce risk and increase your confidence in operating the plant reliably and safely.

TO GET THE RIGHT RESULTS, YOU NEED THE RIGHT PEOPLE

SYSTEM INSPECTION PROCEDURES

RDVI technicians are trained in systematic inspection procedures to enable higher levels of coverage, record, secure and prepare data in a logical format for communication, and correctly perform the post-inspection review processes.

DEGRADATION IDENTIFICATION

Our team has been trained in degradation identification and detection utilising 2D imagery. This is important as technicians must know what they are looking at to capture all relevant data.

TOOLING IDENTIFICATION COMPETENCY

Vertech technicians are trained across a range of digital camera systems, so they know what camera is required and why, how to set it up correctly and what specific lenses need to be applied to get the best results.

TOOLING APPLICATION COMPETENCY

Our team is trained in using and applying specialist support tooling that we design and build to ensure cameras are placed in the correct focal ranges, giving the most transparent view of possible degradation.

PROCESS OPTIMISATION TRAINING

Vertech RDVI technicians are trained in process and operational aspects to ensure they can detect and highlight indications of process reliability, helping your functional team run your facility at the highest efficiency.

SAFETY TRAINING

Our team has been trained to safely use, operate, and get equipment into high-level work environments without causing sim-ops conflicts, incidents, or accidents.

CASE STUDIES

To learn more about our full capability, services, and specialist packages—and how these can improve safety, quality, and cost efficiency across your assets—explore the case study snippets below. Full, detailed case studies are available on our website.

BEACH ENERGY TURNAROUND



Vertech proudly supported Beach Energy Australia's recent ventures into using Remote Digital Visual Inspection (RDVI) services. The team delivered multiple scopes of work within the original budget, safely, and with high-quality inspection data.

INPEX ICHTHYS TURNAROUND



Over two years, Vertech reviewed every item of equipment scheduled for internal inspection of pressure equipment to determine suitability and applicable inspection tooling. They developed an execution strategy for remote visual inspection, provided all RDVI teams for three facilities, and worked with other inspection service personnel to achieve INPEX inspection goals.

SANTOS GLNG SHUTDOWN



The Santos shutdown involved a review of pressure systems to determine suitable inspection tooling. Comprehensive execution plans were developed for each asset, and specialised equipment was mobilised with highly skilled crews to complete all inspection requirements safely, on time, and to a high standard.

BAROSSA AND SCARBOROUGH FEED REVIEWS



Vertech conducted an RDVI review of Barossa and Scarborough Facilities during their design phase. Pressure equipment was examined, resulting in recommendations for dedicated RDVI nozzles. Vertech and Sonomatic collaborated to compile a service package for Greenfield facilities to assist in engineering and designing requirements for inspection without confined space entry.

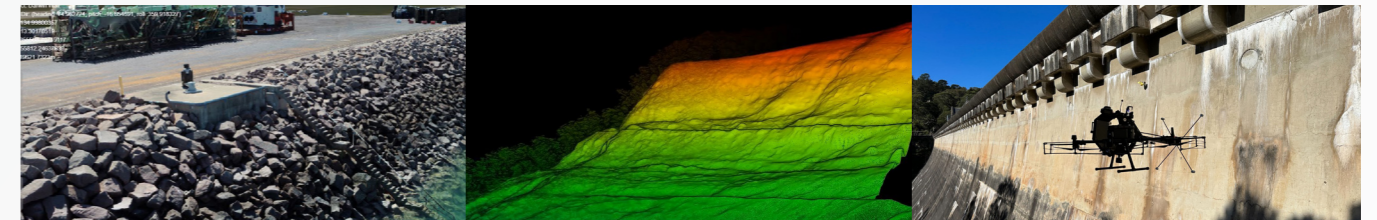
GROUP PARTNERS



AUAV is a leading Australian drone solutions provider, established in 2013 and recognised globally among the top 20 drone service companies. The team delivers high-precision topographic surveys, LiDAR and 3D modelling, infrastructure inspections, and tailored aerial data solutions. All operations are carried out by full-time, CASA-certified professionals, ensuring consistent quality, safety, and reliability—backed by full insurance coverage.

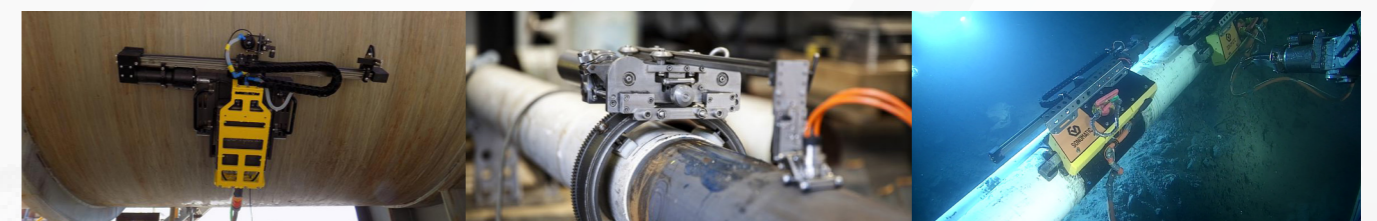
As part of its advanced inspection offering, AUAV provides Remote Digital Visual Inspection (RDVI) services using state-of-the-art drones and confined space technologies. These solutions enable internal inspections of hard-to-access or hazardous areas without the need for intrusive methods or confined space entry, enhancing safety and reducing downtime.

AUAV's proprietary inSite platform supports an end-to-end digital workflow—combining technical consulting, aerial and internal data capture, cloud-based processing, and secure, interactive data hosting. This empowers clients to visualise, monitor, and act on spatial insights with confidence. Supporting infrastructure, mining, energy, utilities, and construction sectors, AUAV delivers scalable and flexible solutions for complex projects across Australia and abroad.



Sonomatic specialises in the design, development, and application of specialised and advanced NDT inspections, and combines this with cutting-edge integrity engineering and subsea engineering capabilities to provide clients with a world-class inspection service. Sonomatic is the global market leader in ROV-deployed subsea inspection, advanced and specialised NDT, and Non-Intrusive Inspection (NII) technologies. Through our in-house E2i R&D engineering division, we develop custom-made inspection equipment, integrity software solutions, and robotic systems.

Sonomatic's NII and Advanced NDT services coupled with Vertech RDVI capabilities ensures a higher coverage, level of confidence and an increased reduction in risk and plant down time. This approach ensures high coverage, reduces risk, and provides greater confidence in asset condition. Our NII services provide quantified inspection data without vessel entry, reducing downtime, costs, and safety risks. Using advanced screening and data modelling, NII enables accurate corrosion measurement and prediction to optimise inspection planning and asset reliability.



KEY CONTACTS

VERTECH

Craig Davies

Group Development Manager

T: +61 (8) 6168 7600 | M: +61 429 222 409

E: Craig.Davies@vertech.com.au

Adam Haling

General Manager - Infrastructure

T: +61 (8) 6168 7600 | M: +61 475 509 140

E: Adam.Haling@vertech.com.au

Rob Porter

Department Manager - Frontline and Ad Hoc

T: +61 (8) 6168 7600 | M: +61 497 327 024

E: Rob.Porter@vertech.com.au

Stephen Brett

Manager - Core Contracts and Offshore Services (WA/NT)

T: +61 (8) 6168 7600 | M: +61 407 818 532

E: Stephen.Brett@vertech.com.au

Joe De Fresnes

Project Manager

T: +61 (8) 6168 7600 | M: +61 487 757 159

E: Joe.DeFresnes@vertech.com.au

Company Contact Information

T: +61 (8) 6168 7600

E: Info@vertech.com.au

SONOMATIC

Alex Cesan

General Manager - Australia and NZ

T: +61 498 442 666

E: Alex.Cesan@sonomatic.com.au

Zach McCann

Region Manager - South East Asia

T: +60 361 581 185 /1180

M: +60 12 555 1569 / +61 404 797 670

E: Zach.Mccann@sonomatic.com.my

Sean Peters

Project Manager - Europe and Africa

T: +44 (0) 1925 414 000 | M: +44 (0) 7386 807 346

E: Sean.Peters@sonomatic.com

Esteban Cesan

President - Americas

T: +1 832 977 0303

E: Esteban.Cesan@sonomatic.com

Clayton Webb

Region Manager - Middle East, Caspian & Black Sea

T: +9712 6580708 | M: +971 50 313 9254

E: Clayton.Webb@sonomatic.com

Jon Millen

Operations Manager - Australia

T: +61 (8) 6168 7606 | M: +61 477 030 058

E: Jon.Millen@sonomatic.com

AUAV

James Rennie

Managing Director

T: +61 1300 738 521 | M: +61 497 070 576

E: James.Rennie@auav.com.au

Jamie Holyoak

General Manager

T: +61 1300 738 521 | M: +61 473 136 614

E: Jamie.Holyoak@auav.com.au

Barry Nixon

Operations Manager - UK

T: +44 (0) 1224 823960

E: Barry.Nixon@auav.co.uk

Luke Campbell

Operations Manager - WA/NT

T: +61 1300 738 521 | M: +61 467 677 886

E: Luke.Campbell@auav.com.au