

# SPECIALIST PACKAGE

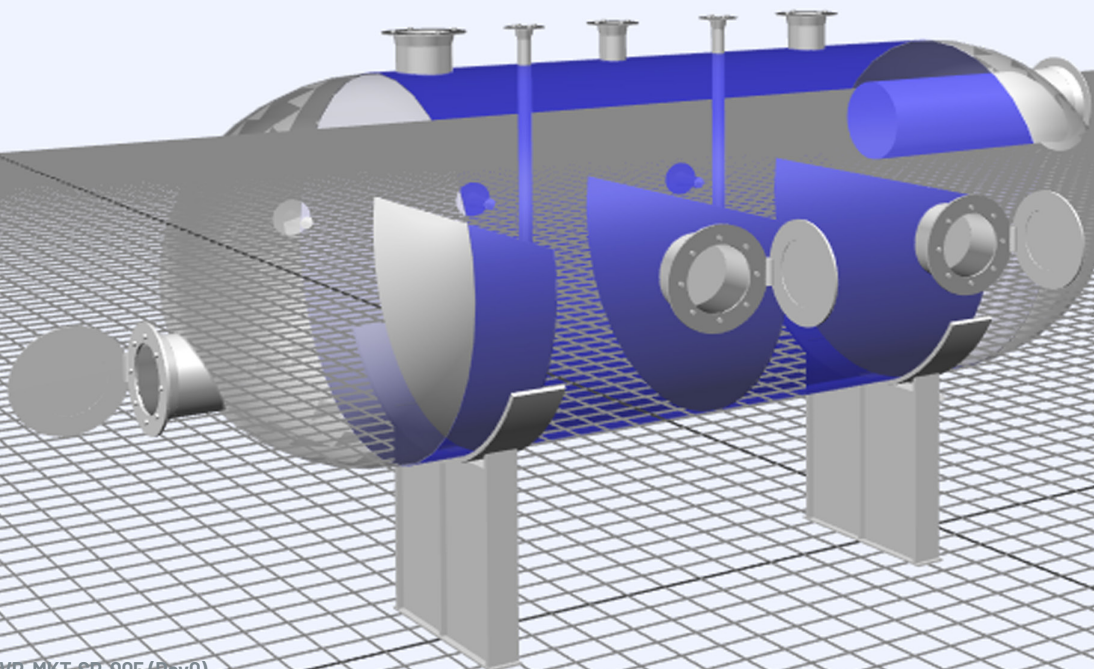
## REMOTE DIGITAL VISUAL INSPECTION FACILITY REVIEW AND PLANNING

### THE PURPOSE

This document has been prepared to help our clients and the supply chain understand the technical capabilities, benefits and services associated with our world-leading RDVI review and planning services.



# VERITECH



# RDVI FACILITY REVIEW AND PLANNING

The RDVI Facility Review and Planning Package integrates Vertech's Remote Digital Visual Inspection (RDVI) team with asset integrity engineers and shutdown planning teams to help put together detailed work plans to execute remote inspections of pressure equipment.

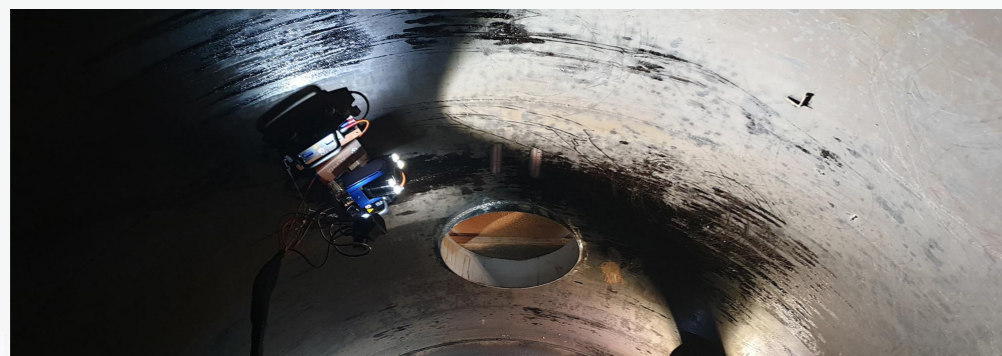
Our team's approach encompasses all areas of inspection activities such as scaffolding, isolations, permitry, and nozzle opening requirements in order to help ensure that all work scopes are performed as efficiently as possible. Through this evaluation process, we are able to help reduce the amount of on-site labour, resources and operational planning required to execute the overall scope of work.

History has proven that RDVI integration and review during the turnaround planning stages of the project helps to capitalise on RDVI capabilities, creates significant savings, increases inspection coverage and reduces turnaround time to help bring the facility online faster.

## KEY FOCUS AREAS

- Reduce mechanical/scaffold/crane costs and resources.
- Select the best access points to enable the inspection to be completed with integrity.
- Ensure the correct inspection camera is applied.
- Detailed RDVI specific Inspection and Test Plans (ITP) to increase inspection coverage and build confidence for plant operations.
- Detailed RDVI specific Vessel Access Plans (VAP).
- Reduce turnaround time frame and cost.
- Increase process integrity data capture for process/operations.
- Reduce Confined Space Entries (CSEs) and intrusive inspection requirements.
- Increase the number of repeatable comparable inspections for future degradation analysis.
- Reduce sim-ops clashes and high-risk activities.
- Increase data availability for your Asset Integrity Management (AIM) assessments.
- Reduce number of staff/personnel on site and subsequent logistics.

RDVI Vessel Access Plan			
Nozzle No.	RDVI Opening Requirements	RDVI Camera	Work Area Size
N0	Full Removal of the Valve Assembly	GB	Type 3
N10	Full Removal of the Valve Assembly	GB	Type 3
M3	Open Manway Required	LPT	Type 3
N12	Remove Blind Flange	SPT	Type 3
N1	Jack Flanges apart / Remove Slip Plate	GB	Type 3
M1	Open Manway Required	LPT	Type 3
N9	Open Nozzle Required	GB	Type 3

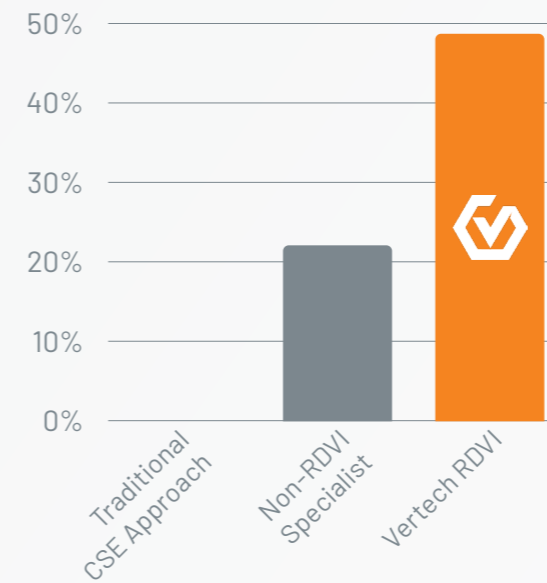


## BENEFITS OF SPECIALISED RDVI SERVICES

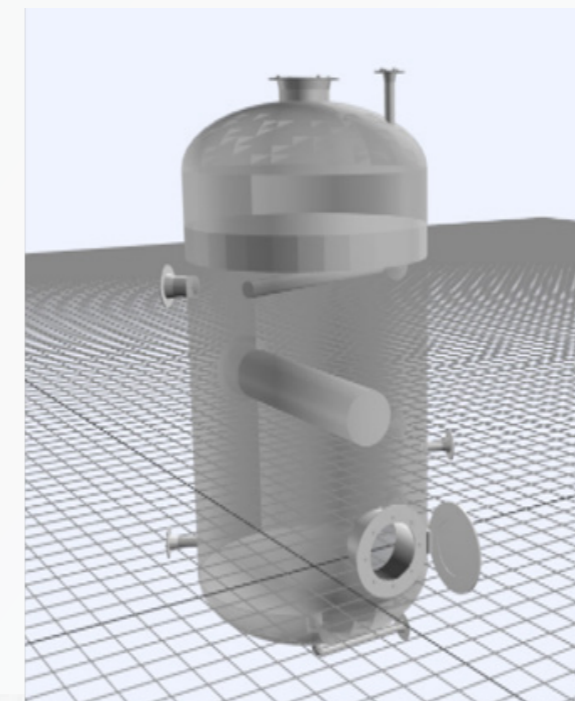
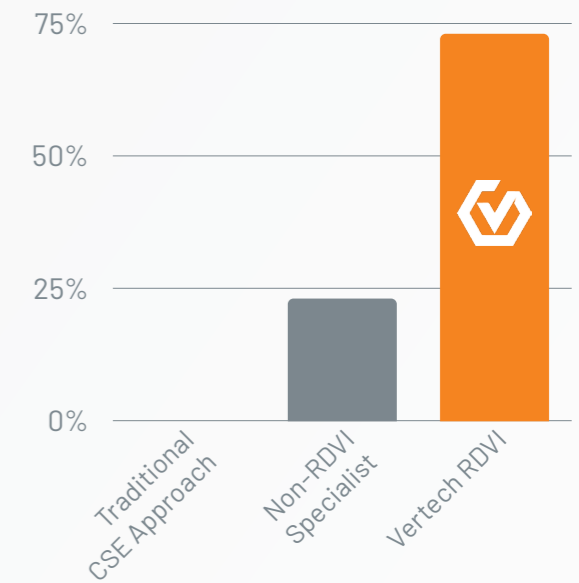
Throughout our team's history of executing this type of specialist work, we have seen a number of non-RDVI specialists attempt this, achieving limited success. This is not an issue for our team, as we have the experience, insights, and knowledge gained from many dedicated projects.

On top of this, each of our technicians has a true passion for what they do and a natural desire to achieve great results. Our team carries a sense of pride in being able to provide our clients with higher levels of coverage so they can have the confidence to operate their plant safely.

### POTENTIAL REDUCTIONS IN TURNAROUND TIMES



### POTENTIAL REDUCTIONS IN TURNAROUND COSTS



RDVI Inspection & Test Plan									
Client	ACME								
Site	Shary Co Platform								
Tag Number	SC 1001								
Description	Dehydration Unit								
Ref No	Location of Inspection	Class/Document Number	Issue Point	Inspection Requirements	RDVI Specific Requirements	Partners to be Notified	Inspection Notes		
1	Upper Dome & Head	MS-1001	SI	Visual inspection of dome and head for cracks, corrosion, pitting and deposits. Check for loose bolts and nuts. Pay particular attention to areas that are exposed to impact and stress that apply and identify those areas that are high stress areas. Report any findings to the appropriate personnel.	GB	None	None	None	None
2	Shell	MS-1001	SI	Visual inspection of shell for cracks, corrosion, pitting and deposits. Check for loose bolts and nuts. Pay particular attention to areas that are exposed to impact and stress that apply and identify those areas that are high stress areas. Report any findings to the appropriate personnel.	GB	None	None	None	None
3	Manway, No. 10, 11, 12, 13, 14, 15, 16, 17, 18, 19, 20	MS-1001	SI	Visual inspection of manway for cracks, corrosion, pitting and deposits. Check for loose bolts and nuts. Pay particular attention to areas that are exposed to impact and stress that apply and identify those areas that are high stress areas. Report any findings to the appropriate personnel.	GB	None	None	None	None
4	Internal Flange	MS-1001	SI	Visual inspection of internal flange for cracks, corrosion, pitting and deposits. Check for loose bolts and nuts. Pay particular attention to areas that are exposed to impact and stress that apply and identify those areas that are high stress areas. Report any findings to the appropriate personnel.	GB	None	None	None	None

# KEY CONTACTS

## VERTECH

### Craig Davies

Group Development Manager

T: +61 (8) 6168 7600 | M: +61 429 222 409

E: [Craig.Davies@vertech.com.au](mailto:Craig.Davies@vertech.com.au)

### Adam Haling

General Manager - Infrastructure

T: +61 (8) 6168 7600 | M: +61 475 509 140

E: [Adam.Haling@vertech.com.au](mailto:Adam.Haling@vertech.com.au)

### Rob Porter

Department Manager - Frontline and Ad Hoc

T: +61 (8) 6168 7600 | M: +61 497 327 024

E: [Rob.Porter@vertech.com.au](mailto:Rob.Porter@vertech.com.au)

### Stephen Brett

Manager - Core Contracts and  
Offshore Services (WA/NT)

T: +61 (8) 6168 7600 | M: +61 407 818 532

E: [Stephen.Brett@vertech.com.au](mailto:Stephen.Brett@vertech.com.au)

### Joe De Fresnes

Project Manager

T: +61 (8) 6168 7600 | M: +61 487 757 159

E: [Joe.DeFresnes@vertech.com.au](mailto:Joe.DeFresnes@vertech.com.au)

### Company Contact Information

T: +61 (8) 6168 7600

E: [Info@vertech.com.au](mailto:Info@vertech.com.au)

## SONOMATIC

### Alex Cesan

General Manager - Australia and NZ

T: +61 498 442 666

E: [Alex.Cesan@sonomatic.com.au](mailto:Alex.Cesan@sonomatic.com.au)

### Zach McCann

Region Manager - South East Asia

T: +60 361 581 185 /1180

M: +60 12 555 1569 / +61 404 797 670

E: [Zach.Mccann@sonomatic.com.my](mailto:Zach.Mccann@sonomatic.com.my)

### Sean Peters

Project Manager - Europe and Africa

T: +44 (0) 1925 414 000 | M: +44 (0) 7386 807 346

E: [Sean.Peters@sonomatic.com](mailto:Sean.Peters@sonomatic.com)

### Esteban Cesan

President - Americas

T: +1 832 977 0303

E: [Esteban.Cesan@sonomatic.com](mailto:Esteban.Cesan@sonomatic.com)

### Clayton Webb

Region Manager - Middle East, Caspian & Black Sea

T: +9712 6580708 | M: +971 50 313 9254

E: [Clayton.Webb@sonomatic.com](mailto:Clayton.Webb@sonomatic.com)

### Jon Millen

Operations Manager - Australia

T: +61 (8) 6168 7606 | M: +61 477 030 058

E: [Jon.Millen@sonomatic.com](mailto:Jon.Millen@sonomatic.com)

