

SPECIALIST PACKAGE

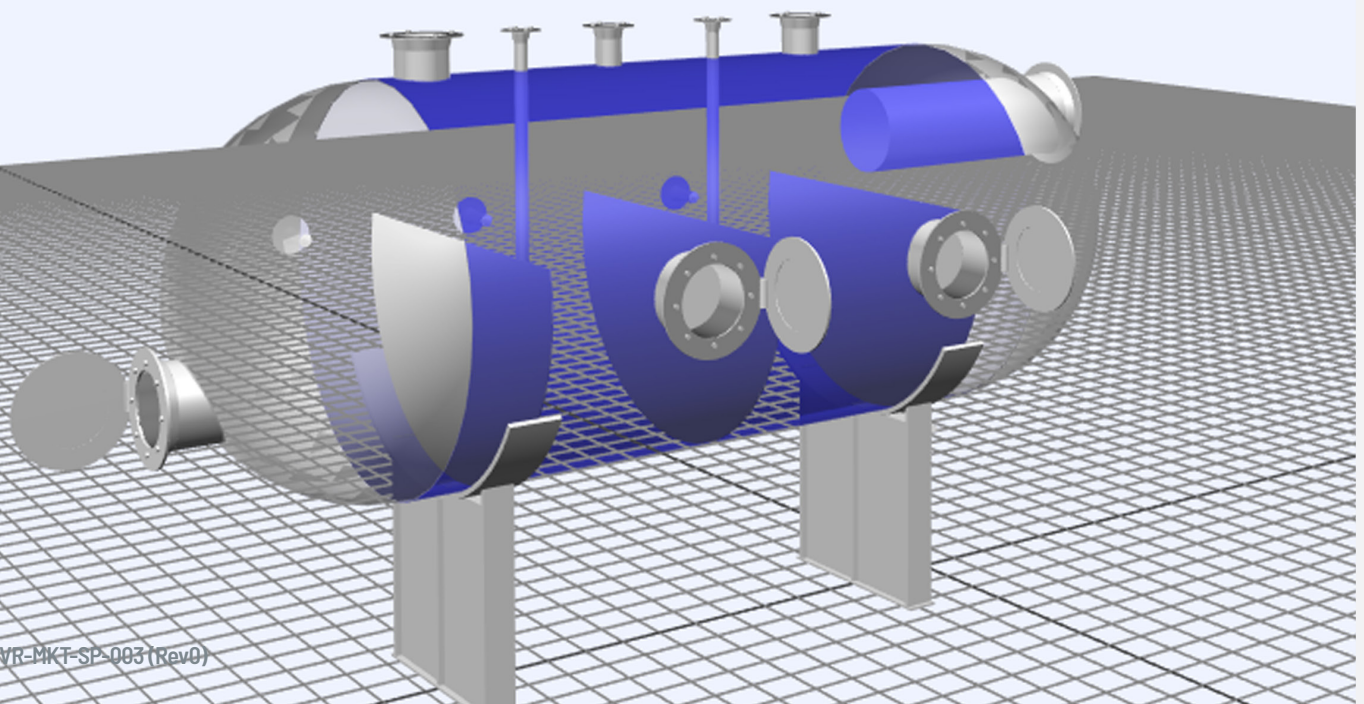
FRONT END ENGINEERING DESIGN FOR RDVI

THE PURPOSE

This document has been prepared to help our clients and the supply chain understand the technical capabilities, benefits and services associated with our world-leading RDVI Front End Engineering Design services.



VERITECH



RDVI FRONT END ENGINEERING DESIGN

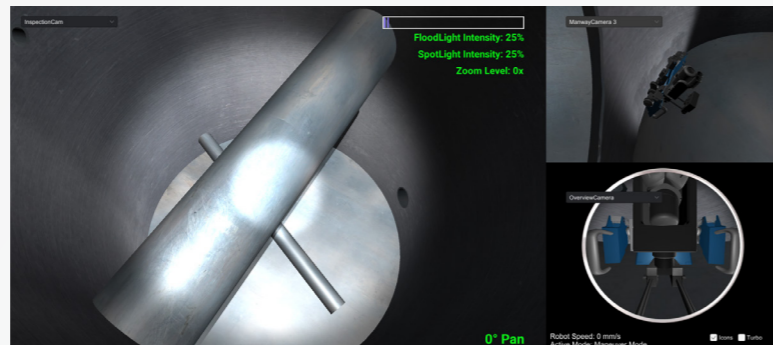
Vertech has a proven track record in optimising the application of RDVI in greenfield projects. An RDVI review of greenfield installations provides the best opportunity to maximise the application of Advanced-RDVI. History has proven that RDVI integration in the Pre-FEED and FEED stages of the project maximises RDVI capabilities and creates the biggest savings, exceptional coverage and reduces shutdown time frames.

Our most experienced technicians and engineers are able to directly integrate into your design and asset integrity teams to:

- ✔ Ensure advanced RDVI methods and techniques are applied, and that recommendations for design changes in assets are communicated to achieve inspection optimisation.
- ✔ Reduce mechanical/scaffold/crane costs and resources.
- ✔ Reduce risk in the operation phase of the plant's life cycle.
- ✔ Reduce sim-ops clashes.
- ✔ Select the best access points to enable the inspection to be completed with integrity.
- ✔ Reduce number of staff/personnel on site and subsequent logistics.
- ✔ Increase the number of repeatable comparable inspections for future degradation analysis.
- ✔ Reduce shutdown time frame and cost.
- ✔ Increase integrity data capture to support process and operations.
- ✔ Future-proof access requirements to enable online inspections, hydrocarbon enriched inspections and the application of remote NDT techniques.
- ✔ Reduce Confined Space Entries (CSEs) and Intrusive access requirements.
- ✔ Reduce safety risk profiles and high risk activities.
- ✔ Increase confidence in forward maintenance planning and risk assessment.
- ✔ Increase inspection coverage to build confidence in operating the plant.
- ✔ Increase data availability for your Asset Integrity Management (AIM) assessments.
- ✔ Increase alignment and integration with other NII techniques for qualitative inspection results.

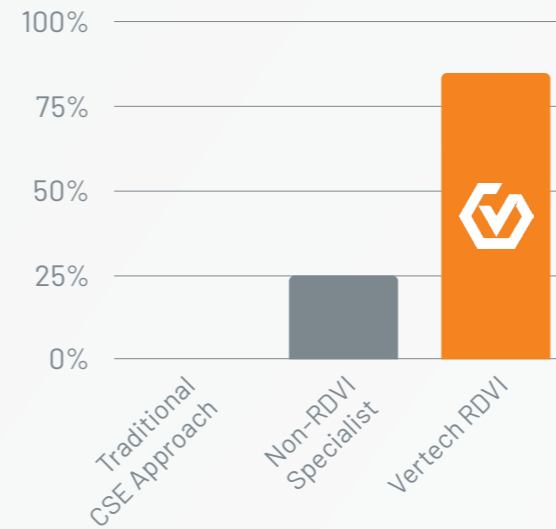
Throughout our history of executing this type of specialist work, we have seen a number of non-RDVI specialists attempt this, achieving limited success. This is not an issue for our team, as we have the experience, insights, and knowledge gained from many dedicated projects.

On top of this, each of our technicians have a true passion for what they do and a natural desire to achieve great results. Our team carries a sense of pride in being able to provide our clients with higher levels of coverage so they can have the confidence to operate their plant safely.

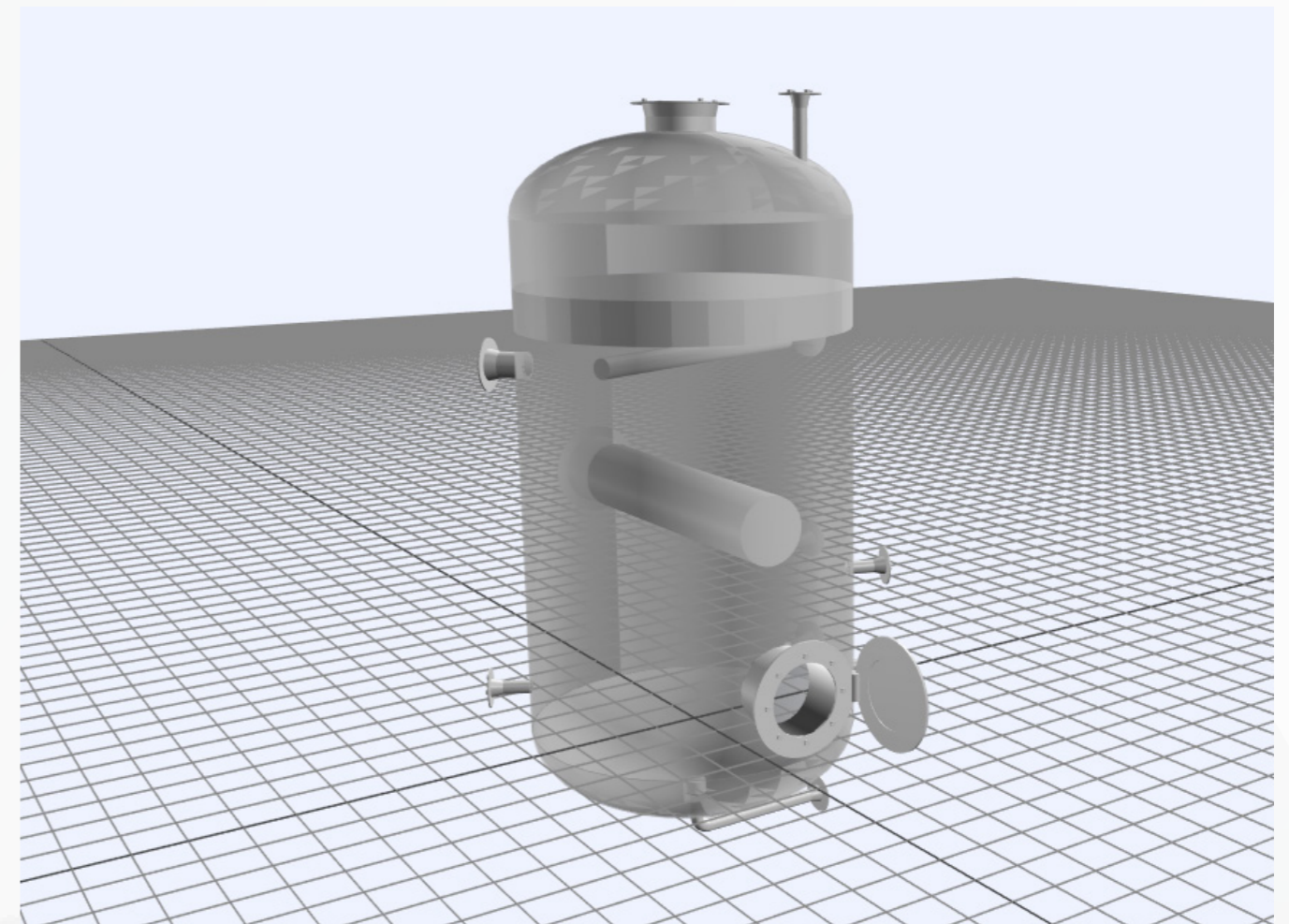
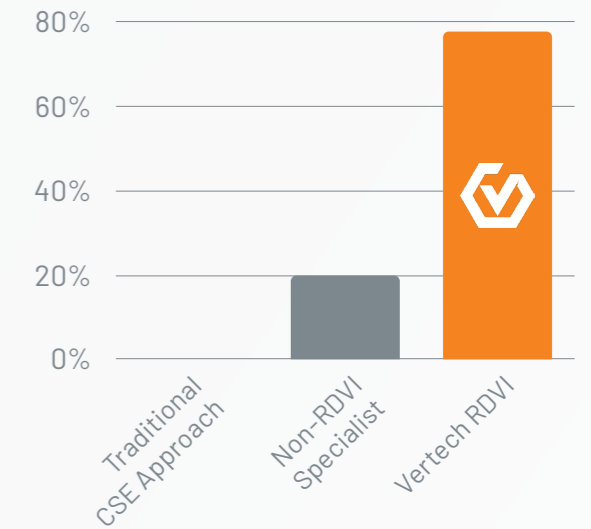


BENEFITS OF FEED RDVI

POTENTIAL REDUCTIONS IN S/D TIMES



POTENTIAL REDUCTIONS IN S/D COSTS



KEY CONTACTS

VERTECH

Craig Davies

Group Development Manager

T: +61 (8) 6168 7600 | M: +61 429 222 409

E: Craig.Davies@vertech.com.au

Adam Haling

General Manager - Infrastructure

T: +61 (8) 6168 7600 | M: +61 475 509 140

E: Adam.Haling@vertech.com.au

Rob Porter

Department Manager - Frontline and Ad Hoc

T: +61 (8) 6168 7600 | M: +61 497 327 024

E: Rob.Porter@vertech.com.au

Stephen Brett

Manager - Core Contracts and
Offshore Services (WA/NT)

T: +61 (8) 6168 7600 | M: +61 407 818 532

E: Stephen.Brett@vertech.com.au

Joe De Fresnes

Project Manager

T: +61 (8) 6168 7600 | M: +61 487 757 159

E: Joe.DeFresnes@vertech.com.au

Company Contact Information

T: +61 (8) 6168 7600

E: Info@vertech.com.au

SONOMATIC

Alex Cesan

General Manager - Australia and NZ

T: +61 498 442 666

E: Alex.Cesan@sonomatic.com.au

Zach McCann

Region Manager - South East Asia

T: +60 361 581 185 /1180

M: +60 12 555 1569 / +61 404 797 670

E: Zach.Mccann@sonomatic.com.my

Sean Peters

Project Manager - Europe and Africa

T: +44 (0) 1925 414 000 | M: +44 (0) 7386 807 346

E: Sean.Peters@sonomatic.com

Esteban Cesan

President - Americas

T: +1 832 977 0303

E: Esteban.Cesan@sonomatic.com

Clayton Webb

Region Manager - Middle East, Caspian & Black Sea

T: +9712 6580708 | M: +971 50 313 9254

E: Clayton.Webb@sonomatic.com

Jon Millen

Operations Manager - Australia

T: +61 (8) 6168 7606 | M: +61 477 030 058

E: Jon.Millen@sonomatic.com



VERTECH