

CAPABILITY STATEMENT

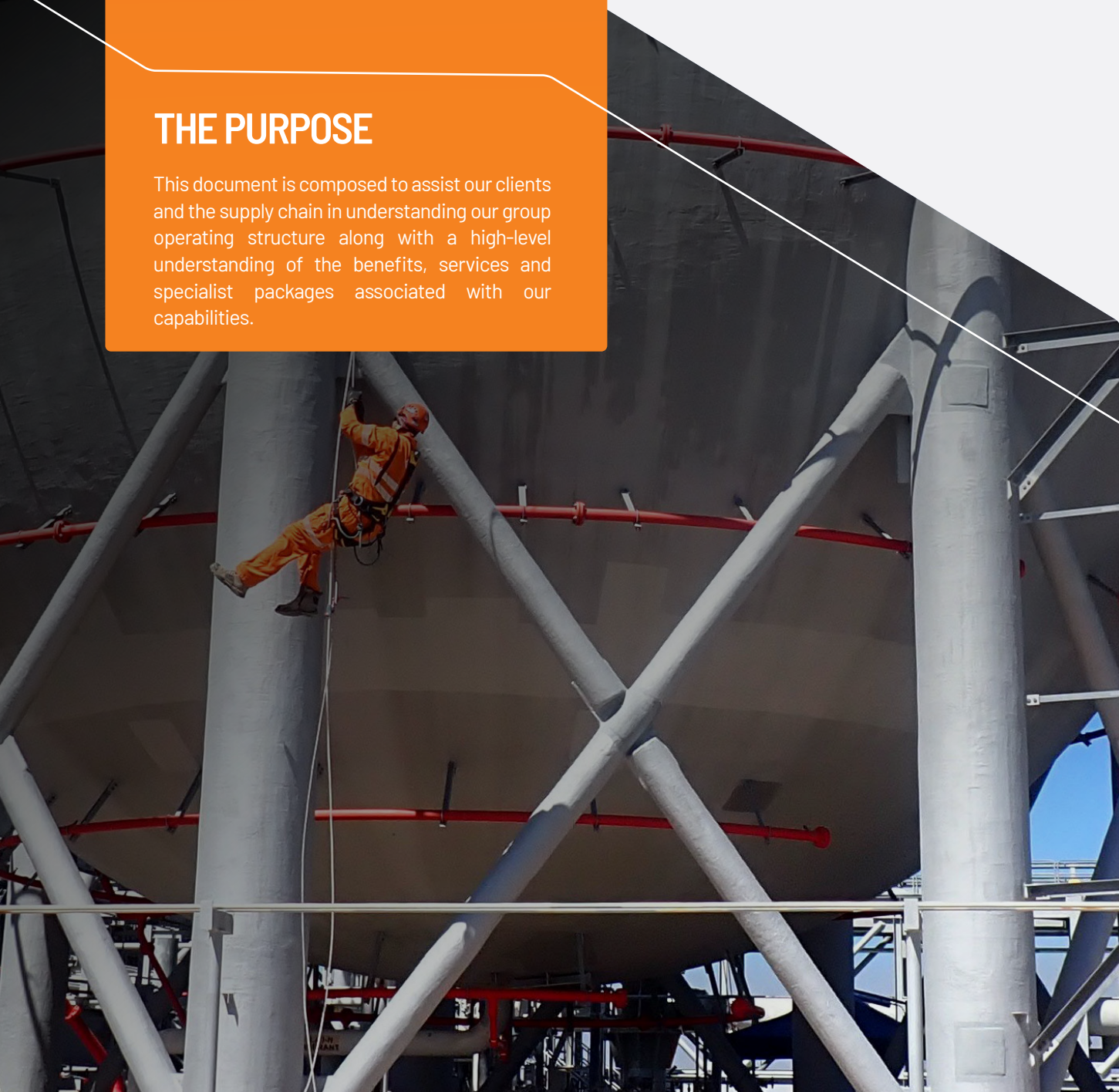
ONSHORE

THE PURPOSE

This document is composed to assist our clients and the supply chain in understanding our group operating structure along with a high-level understanding of the benefits, services and specialist packages associated with our capabilities.



VERITECH



WHO WE ARE



Vertech provides specialised in-service inspection services across various industries, ensuring the integrity and safety of critical assets. We deliver Non-Destructive Testing (NDT) solutions to support companies managing assets and infrastructure in diverse sectors. Our expertise extends to offering advanced access systems and inspection services for maintenance, upgrades, repairs, and remediation projects.

ONSHORE

A blend of technical innovation and expert execution marks Vertech's Onshore Capabilities in the onshore sector. Specialising in advanced and conventional Non-Destructive Testing (NDT), our services extend to aerial and robotic inspection, ensuring thorough and efficient asset integrity assessments. This focus on cutting-edge methodologies is coupled with a commitment to safety and sustainability, underlining our role as leaders in the industry.

Our services also include comprehensive maintenance and repair solutions and tailoring strategies to meet the unique demands of onshore facilities. By prioritising customised and efficient solutions, Vertech effectively enhances the longevity and performance of assets, setting a high standard in onshore asset management.

GROUP ACCREDITATIONS

IRATA Rope Access

NATA Certification for Non-Destructive Testing
(ISO 17025)

NATA Certification for Lifting Equipment
Inspections (ISO 17020)

NATA Certification for In-Service Inspections
(ISO 17020)

DROPS certification

ISO 9001:2015

ISO 29001:2020

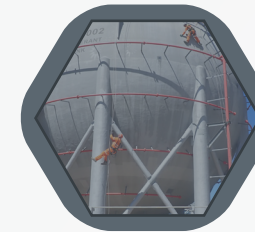
ISO 14001:2015

ISO 45001:2018

CASA ReOc



ONSHORE PACKAGES



IN-SERVICE INSPECTION

Vertech and our partners offer in-service inspection services to help manage asset integrity. Our experienced inspectors ensure industry compliance, reducing risk and cost and ensuring safety.



NON-DESTRUCTIVE TESTING

Vertech offers non-destructive testing services to businesses across different industries. Our team is highly experienced in NDT inspection planning and providing solutions to comply with international and Australian standards. Vertech is certified to ISO 17025 as an NDT inspection body by NATA, with accreditation number 18112.



REMOTE DIGITAL VISUAL INSPECTION

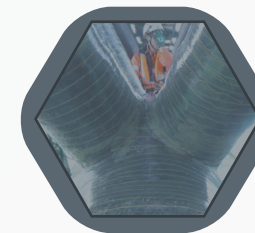
Vertech uses Advanced-RDVI for pre-planning and specialised execution packages, delivering high-quality data for sign-off, analysis, risk reviews, and process operational requirements. The complete remote visual inspection services guarantee the highest integrity, repeatability, and data reliability.



LIFTING EQUIPMENT INSPECTION AND MANAGEMENT

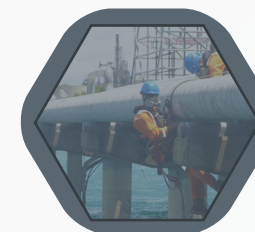
Our highly multi-disciplined lifting team provides comprehensive inspection and maintenance services for lifting and hoisting equipment. We are NATA accredited, have an in-house competency program, and give our inspectors additional NDT, LEEA, and API 2D & 2D crane inspection training.

Our team will work with our clients to implement a framework by using tablet based on reporting software to effectively manage the gaps usually encountered in ineffective lifting gear management systems.



FABRIC MAINTENANCE

Vertech's Jetty Fabric Maintenance Service provides comprehensive and expert maintenance solutions for jetty infrastructure, ensuring long-term durability and operational efficiency.



SPECIALIST MAINTENANCE

Vertech offers specialist access systems and inspection services for maintenance, upgrades, repairs, and remediation. Our experienced team ensures safety, cost, and efficiency benefits for clients in various business projects.

SPECIALIST PACKAGES

DECOMMISSIONING PACKAGE (V-COMM)



Vertech's V-COMM Decommissioning Package was formed to support the full decommissioning cycle. Providing a collection of specialist services, systems, processes, and products, Vertech's experts will work alongside each client to achieve environmental and safety excellence, reduce cost through efficiency, and exceed all regulatory requirements.

LIFTING EQUIPMENT (V-LIFT)



The V-LIFT Package is a collection of specialist services, systems, and products refined over a decade to provide unparalleled support for cranes and lifting equipment. The V-LIFT Package was first built with efficiency, quality, and compliance with Australian legislation in mind, then refined to maximise cost, time, and safety benefits for our customers. The package has been utilised by major downstream LNG operators, coal seam gas operators, offshore production operators and numerous upstream drilling assets over multi-year terms.

SHUTDOWN & TURNAROUND PACKAGE (V-TAR)



Vertech's V-TAR Specialist Package provides comprehensive integrity, inspection, and access services tailored to specialist shutdown (SD) or turnaround (TAR) projects. In the oil and gas, power generation, and mining industries, turnarounds (TARs) are critical to a facility's ongoing operation. These peak and intense activity periods make it imperative to have the correct planning, the right equipment, and, most importantly, the best people.

GEOTECHNICAL



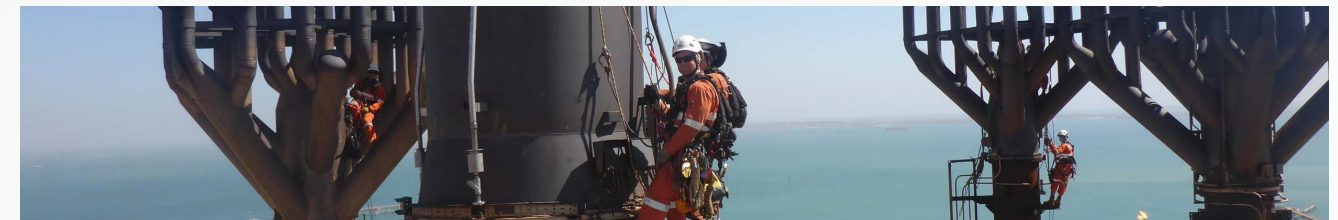
Our Geo Tech package includes survey, planning, drilling, anchoring, meshing, stabilisation, and various access systems to ensure the stability and safety of all geotechnical features or slopes. This package can also include UAV inspection and area surveys.

PIPELINE INSPECTION & INTEGRITY PACKAGE (V-PIIP)



The Vertech Pipeline Inspection & Integrity Package (PIIP) combines a fleet of customised vehicles, specialist mobile processing facilities, the latest-generation equipment, accredited Non-Destructive Testing methods, and a team of highly experienced inspectors to provide onshore pipeline inspection and integrity management services that directly meet our clients' needs.

FLARE IRM PACKAGE (V-FLARE)



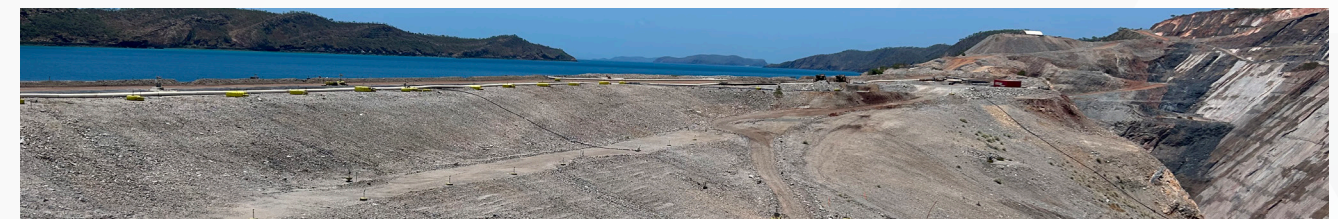
Vertech's V-Flare Specialist Package provides end-to-end maintenance, remediation and replacement services for onshore or offshore flare tips. Using a combination of inspection techniques, Non-destructive Testing (NDT) methods, rope access and specialist access systems, our expert team can create a solution to meet any client's needs. As flare tip replacement, remediation or repair projects are typically completed during shutdown, turnaround, or outage periods, these scopes are usually the critical path to production.

JETTY



A turnkey fabric maintenance package combining specialist access and inspection systems with remediation, repair and wrap solutions for jetty underdecks, wharfs and helidecks. Our team will assess each scope individually and utilise the best access method whether is be rope access, underdecking or scissor lift barge, to save our clients time and money.

MINING & MINERALS



We provide inspection, maintenance, and access services to the mining industry. We use advanced technology to ensure productivity and cost-effectiveness for our clients.

CASE STUDIES

BEACH ENERGY TURNAROUND



Vertech was proud to have supported Beach Energy Australia's recent ventures into using dedicated and specialised remote digital visual inspection (RDVI) services. Both major turnarounds required a detailed review of vessels and suitability and assessments of other areas of opportunity to help Beach reduce its overall confined space entry (CSE).

On-site delivery by highly experienced and trained RDVI technicians, armed with the latest camera and crawler systems, was a vital aspect of the service provided to Beach. The team delivered numerous additional scopes of work within the original budget, safely and with high-quality and repeatable inspection data.

ILNG, CPF AND FPSO TURNAROUND AND SHUTDOWN



In 2021, Vertech provided over 130 multi-skilled inspectors, tradespeople and rope access personnel to deliver shutdown work across three assets.

The scope included an IRATA rope access emergency response across the whole of ILNG, along with confined space rescue teams, a complex flare tip replacement on the FPSO, 13 RDVI teams with robotic crawlers, camera systems, and specialist tooling, NDT inspectors and in-service inspectors to complete statutory inspections of pressure systems, and a ten-man rope access mechanical team supporting project work.

The turnaround was one of INPEX's first major turnarounds. Despite its significant scale and exceptional planning work and support for the various contractor groups, outstanding results were achieved, which will set the assets up for long-term reliability and success.

MOOMBA TO CROSS BORDER CCS PIPELINE



The Moomba to Cross-Border CCS Pipeline runs east from the Santos-owned Moomba gas Plant to depleted reservoirs in the Marabooka and Strzelecki fields. At a diameter of DN250 (10") and a length of approximately 50 kilometres, Vertech was engaged to conduct radiographic inspections throughout the pipeline's construction by MPC Kinetic.

The objective of the Moomba CCS project was to capture this vented CO2 and store it underground within depleted gas reservoirs, avoiding its release into the atmosphere

RIO TINTO PARKER POINT STAGE 2 WHARF PILE STRUCTURAL INTEGRITY



Vertech was selected by Rio Tinto to deliver the ongoing Parker Point Stage 2 Wharf Pile Structural Integrity Scope. This complex project includes the removal of large Ship Access Platform (SAP) beams and the structural assessment of jetty piles, requiring a coordinated, multi-disciplinary approach across engineering, inspection, logistics, and operations.

So far, a key milestone has been achieved with the successful removal of two 13-ton SAP beams using a custom rigging arrangement and tide-dependent dual lift involving a barge transfer. This achievement reflects the high level of technical planning, teamwork, and safety leadership across the Vertech and Sonomatic teams.

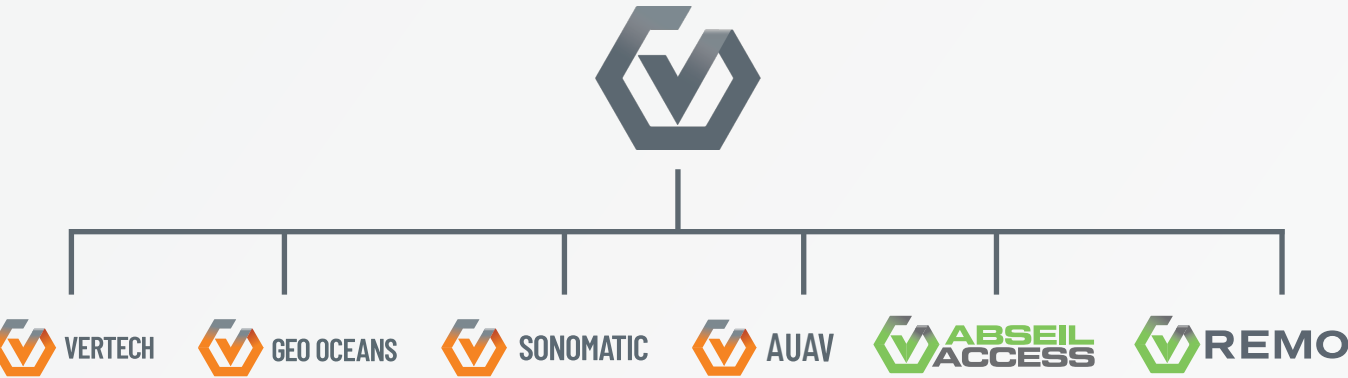
With inspection and engineering support from sister company, Sonomatic, robust lift planning, and a comprehensive Level 2 Risk Assessment developed by Vertech's HSE team, the project is progressing with a strong focus on safety, precision, and collaboration. The Rio Tinto team has responded positively to the expertise and solution-focused approach demonstrated to date.

COMBINED SERVICES

Vertech work alongside a Group of affiliated companies that together, deliver a comprehensive range of asset integrity, inspection, maintenance and specialist access services across a wide range of industries and sectors across Australia and the Asia Pacific. Our shared capabilities span project management, NDT, drone and ROV inspections, 3D modelling, specialist access and maintenance, and environmental and export infrastructure services.

- Vertech** – Experts in specialist access, maintenance, and repairs.
- Geo Oceans** – Leaders in Mini-ROV IRM and water inspection, with expertise in AUV and ASV deployment.
- Sonomatic** – A global leader in specialised NDT and integrity inspection solutions.
- AUAV** – Specialists in UAV, drone-based inspections, and 3D modelling.
- Remo Technical Services** – A leading supplier of turbine installation, maintenance, and inspection services.
- Abseil Access** – Specialists in bridge engineering, geotechnical slope stabilisation, rockfall protection, and rope access solutions.

Together, we deliver tailored service packages designed to meet the specific needs of each client and asset. By collaborating across our group of companies, we drive innovation, improve safety, and ensure consistent delivery of high standards across the mining and infrastructure sectors.



OUR 4 CORE VALUES



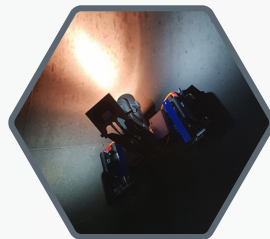
PEOPLE



SAFETY



QUALITY



INNOVATION

GROUP SUMMARY



Geo Oceans is an award winning subsea services provider delivering innovative and disruptive ROV inspection solutions to a global client base. We specialise in developing and deploying small ROV systems and subsea robotics directly from assets or vessels of opportunity to provide clients with reliable, safe, low carbon and low cost solutions for managing subsea asset integrity. We are also experts in the planning and execution of offshore surveys, using autonomous survey vehicles (AUV).



Sonomatic specialise in the design, development and application of Non-Destructive Testing (NDT) inspections. Since the company's formation in the 1980s, we have combined these NDT processes with integrity engineering capabilities to provide fully integrated inspection packages that directly meet the needs of the client.

Bringing innovative bespoke inspection solutions to the market through in-house development of equipment, software and robotics, Sonomatic resides as the global leader for ROV-deployed subsea inspection and Non-Intrusive Inspection (NII) technologies.



AUAV is a drone service provider established in 2013. We offer topographical surveys, LiDAR, inspection, 3D modelling, and bespoke projects. Our team are full-time employees, ensuring quality control. Our proprietary inSite data solution provides consulting, capture, and hosting. We're a top 20 drone service provider globally, certified by the Australian Civil Aviation Safety Authority and insured.



REMO Technical Services specialises in turbine installation, maintenance, and inspection. We offer a managed solution based on extensive experience in wind and renewable energy building on their reputation established through successful wind turbine installation and commissioning projects across Europe.



Abseil Access has supplied industry-leading services including bridge design, bridge engineering and construction, Geotechnical slope stabilisation and rockfall protection, conservation, and rope access services across a multitude of sectors since 1992. In that time, the Abseil Access team have come to understand the frequently encountered challenges our customers face and how we can provide maximum value. Our offices are located in Wellington, Christchurch, Nelson, and New Plymouth to support operations in even the most remote parts of New Zealand.

KEY CONTACTS

VERTECH

Craig Davies
Group Development Manager
T: +61 (8) 6168 7600 | M: +61 417 855 573
E: Craig.Davies@vertechgroup.com.au

Paul Lavender
General Manager – Western Australia
T: +61 (8) 6168 7600 | M: +61 417 961 016
E: Paul.Lavender@vertechgroup.com.au

John Rose
General Manager – East Coast
T: +61 (8) 6168 7600 | M: +61 407 047 169
E: John.Rose@vertechgroup.com.au

James Grant
General Manager – Northern Territory
T: +61 (0) 455 255 202
E: James.Grant@vertechgroup.com.au

Adam Haling
General Manager – Infrastructure
T: +61 (8) 6168 7600 | M: +61 475 509 140
E: Adam.Haling@vertechgroup.com.au

Donovan Rheeders
Department Manager – Oil and Gas
T: +61 (8) 6168 7600 | M: +61 439 110 880
E: Donovan.Rheeders@vertechgroup.com.au

Rob Porter
Department Manager – Frontline and Ad Hoc
T: +61 (8) 6168 7600 | M: +61 497 327 024
E: Rob.Porter@vertechgroup.com.au

SONOMATIC

Alex Cesan
General Manager – Australia and NZ
T: +61 498 442 666
E: Alex.Cesan@sonomatic.com.au

Zach McCann
Region Manager – South East Asia
T: +60 12 555 1569 | M: +61 404 797 670
E: Zach.Mccann@sonomatic.com.my

Jon Millen
Operations Manager – Australia
T: +61 (8) 6168 7606 | M: +61 477 030 058
E: Jon.Millen@sonomatic.com.au

GEO OCEANS

Nick Veitch
Managing Director
T: +61 (8) 6168 7611 | M: +61 400 352 134
E: Nick.Veitch@geoceans.com.au

Andy Mercer
Operations Manager
T: +61 (8) 6168 7611 | M: +61 410 153 060
E: Andy.Mercer@geoceans.com.au

AUAV

James Rennie
Managing Director
T: 1300 738 521 | M: +61 497 070 576
E: James.Rennie@auav.com.au

Jamie Holyoak
General Manager
T: 1300 738 521 | M: +61 473 136 614
E: Jamie.Holyoak@auav.com.au

Barry Nixon
Operations Manager – UK
T: +44 (0) 1224 823960
E: Barry.Nixon@auav.co.uk

Luke Campbell
Operations Manager – Western Australia
T: 1300 738 521 | M: +61 467 677 886
E: Luke.Campbell@auav.com.au

REMO

Russell Bell
Managing Director
T: +61 7 3361 0612 | M: +61 429 540 606
E: Russell.Bell@remo-ts.com

ABSEIL ACCESS

Alex Whilmshurst
General Manager
T: +64 27 488 2849
E: Alex.Wilmshurst@abseilaccess.co.nz