

CASE STUDY

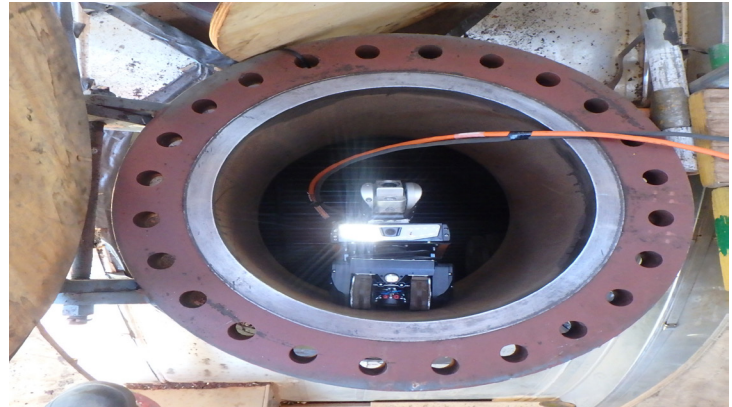
VERTECH GROUP

19 Walters Drive, Osborne Park
6017, WA, Australia

P: +61 8 6168 7600

E: Info@vertechgroup.com.au

GLADSTONE LNG TURNAROUND



1 / Introduction

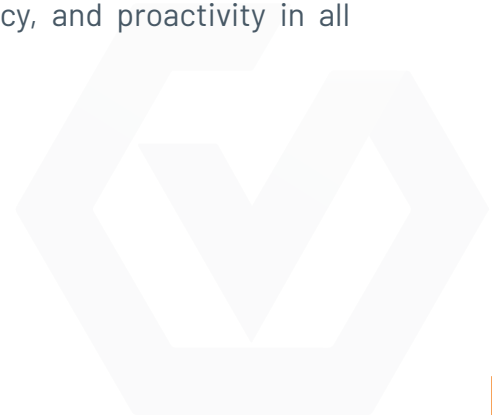
In 2021, Veritech undertook the ambitious task of spearheading a multifaceted inspection service operation at the Gladstone LNG plant under Santos's stewardship. This case study serves

as an introspective look into the innovative techniques we introduced, the procedures we led, and an overarching view of the project from our perspective.

2 / Innovation

Our commitment to leading-edge innovation was evident throughout the project. We integrated Advanced Non-Destructive Testing (NDT) into our suite of inspection methodologies, ensuring thoroughness and precision. Additionally, we incorporated in-service inspection of pressure equipment, maximising the uptime of critical assets. Our teams embraced the challenges posed by the plant's structure by deploying rope access methodologies, a testament to our drive

for efficiency and effectiveness. Beyond this, we leaned heavily into the digital age, as our proprietary Remote Digital Visual Inspection (RDVI) teams carried out meticulous examinations of every component. These innovations, fine-tuned by our skilled personnel over the years, were pivotal in streamlining the inspection process, ensuring depth, efficiency, and proactivity in all assessments.



3 / Project Summary

At Vertech, it is our belief that with the right team, the impossible can be achieved. Our team of dedicated professionals, including AICIP, NDT, rope access, advanced NDT, tube inspectors, and RDVI specialists, worked tirelessly to ensure that our inspection services met the highest safety standards. Our meticulous planning and attention to detail were evident in the positive feedback we received from our clients. We carefully reviewed all details of the inspection work packs to provide accurate estimates for labor and equipment requirements. We developed detailed work plans for RDVI, CVI, and NDT inspections, including logistics such as scaffold and lagging requirements. Our team also strategically deployed specialist inspection personnel and organized all necessary equipment.

What sets us apart is our commitment to going above and beyond. In addition to the prescribed scope of work, we conducted additional inspections during the plant shutdown. Our comprehensive inspection regimen covered a vast range of equipment and machinery, with inspection frequencies ranging from every two to eight years. We evaluated specialized equipment such as CO2 absorbers, regenerator reboilers, and waste heat recovery units, among others.

We are proud to have completed the project on schedule and within budget, with an impeccable safety record. At Vertech, we are dedicated to delivering exceptional service that exceeds our clients' expectations.



CONTACTS

Vertech Group

T: +61(8) 6168 7600

E: Info@vertechgroup.com.au

Sonomatic AUS

T: +61(8) 6240 2450

E: Sales@sonomatic.com.au

Geo Oceans

T: +61(8) 6168 7611

E: Info@geoceans.com.au

AUAV

T: 1300 738 521

E: Contact@auav.com.au

Blue Ocean Marine Services

T: +61(8) 6263 8785

E: Info@blue-ocean.com.au

APS

T: +61(3) 9466 1887

E: Info@apsystems.net.au

Abseil Access

T: +64 (4) 801 5336

E: Info@abseilaccess.co.nz

