

CAPABILITY STATEMENT

MINING & MINERALS

THE PURPOSE

This document is composed to assist our clients and the supply chain to understand our group operating structure along with a high-level understanding of the benefits, services and specialist packages associated with our mining and minerals capabilities.



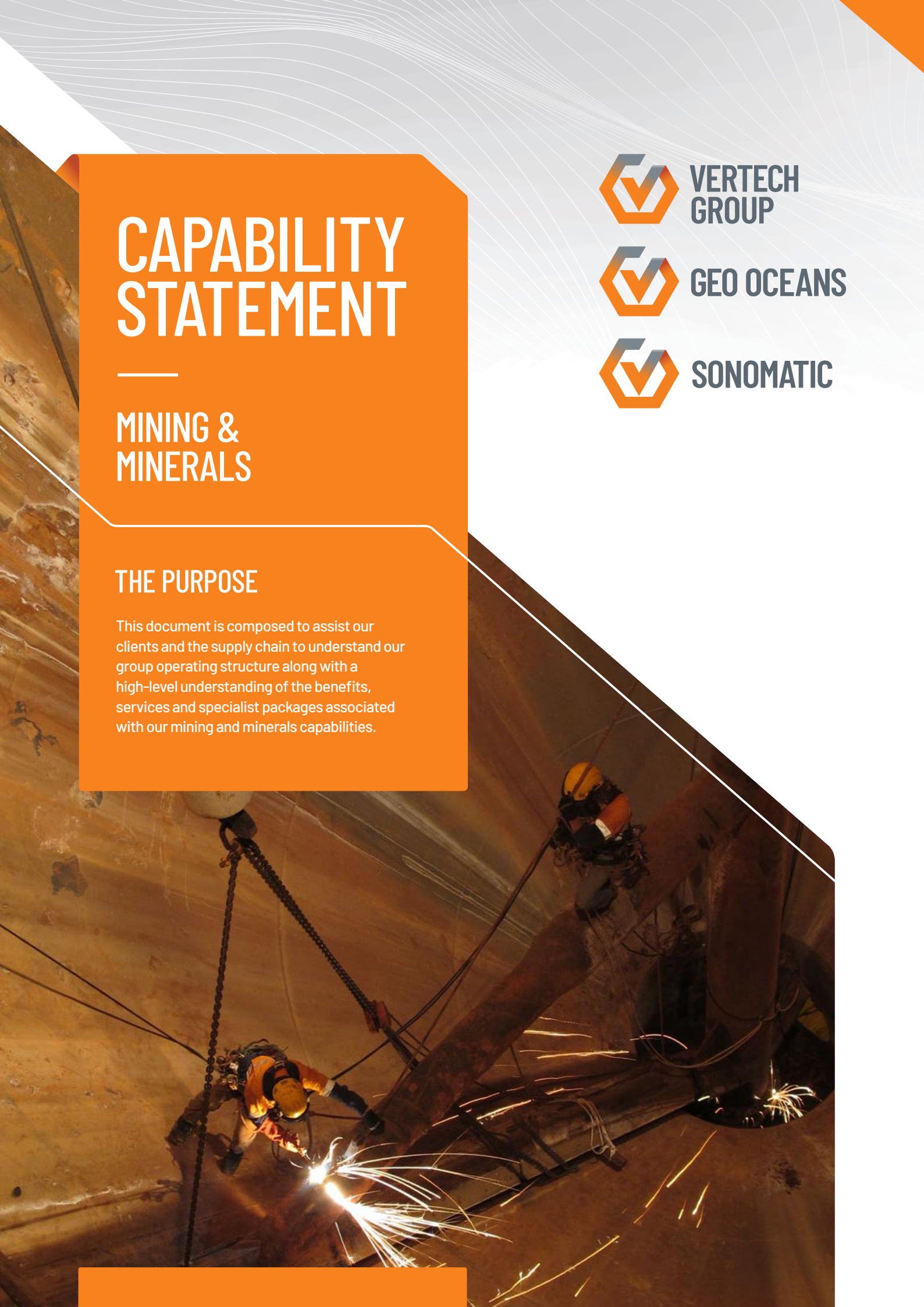
VERITECH
GROUP



GEO OCEANS



SONOMATIC



COMBINED SERVICES

Vertech, Sonomatic, Geo Oceans and Abseil Access have combined into a single group that compliments each other's strengths. As a cohesive unit we can provide a wide range of services and specialist packages tailored to the need of each client. No matter what the scope, we offer the very best mechanical, coating, alternative access, rigging, visual inspection, Mini ROV, and NDT services, all within one group.

OWNERSHIP STRUCTURE



WE PRIDE OURSELVES ON OUR



MINING & MINERALS

The mining sector is dynamic in nature requiring speed, efficiency and quality, with the same being expected from its contractors. Vertech prides itself on its ability to provide high-quality inspection and maintenance services performed by an agile workforce strategically located across the Asia Pacific.

Our Mining and Mineral Department's client centric approach has been refined and perfected through years of industry experience. Truly understanding each client's own unique needs has enabled us to deliver a best-in-class outcome on capital projects, asset maintenance campaigns and major turn arounds with unparalleled cost, time and safety benefits.

Vertech's passionate and experienced people are another key part of our success. Our Asia Pacific team have been hand selected from the best and brightest to ensure that our clients have the right systems, equipment and support to meet all their needs.

ASSET OPERATING EXPERIENCE



GROUP ACCREDITATIONS



ISO 9001: 2015

ISO 14001:2015

ISO 29001:2010

ISO 45001:2018



ABS Approved Supplier for UAV

ABS Remote Inspection Techniques (ROV)

BV Remote Inspection Techniques



Vertech IRATA Operator

LR Thickness Measurements of Hull Structure

NATA Lifting and Lifted Inspection

NATA Pressure Vessel Inspection

NATA NDT Inspection

CASA UAV Accreditation

HIGH QUALITY WORK. FIRST TIME, EVERY TIME.

MINING & MINERAL SERVICES

JETTY INSPECTION & REMEDIATION

Jetty & wharf inspection and remediation is a true specialisation of Vertech Group. Through our accredited inspections, holistic approach to access and our maintenance specialties, we deliver jetty packages that consistently save our customers time and money.

MECHANICAL & FITTING

Our multi-disciplinary teams provide high mobility mechanical maintenance, upgrade or repair services on a range of equipment during routine operations, shut downs, turn arounds or on a call out basis.

PAINTING & BLASTING

Vertech's fabric maintenance teams provide a range of high mobility surface treatments and coating system applications, all underpinned by our variety of access specialisations. In addition to standard or conventional methods we can apply a range of composite wraps selected specifically for each scenario and structure.

HAZARDOUS AREA INSPECTION

Our team and our electrical partners provide end-to-end electrical solutions including engineering, design, procurement, installation and repair. Our electrical specialisation focuses on Ex hazardous area inspections, testing, compliance and installations with a custom built management system with RFID capability.

ACCESS MANAGEMENT

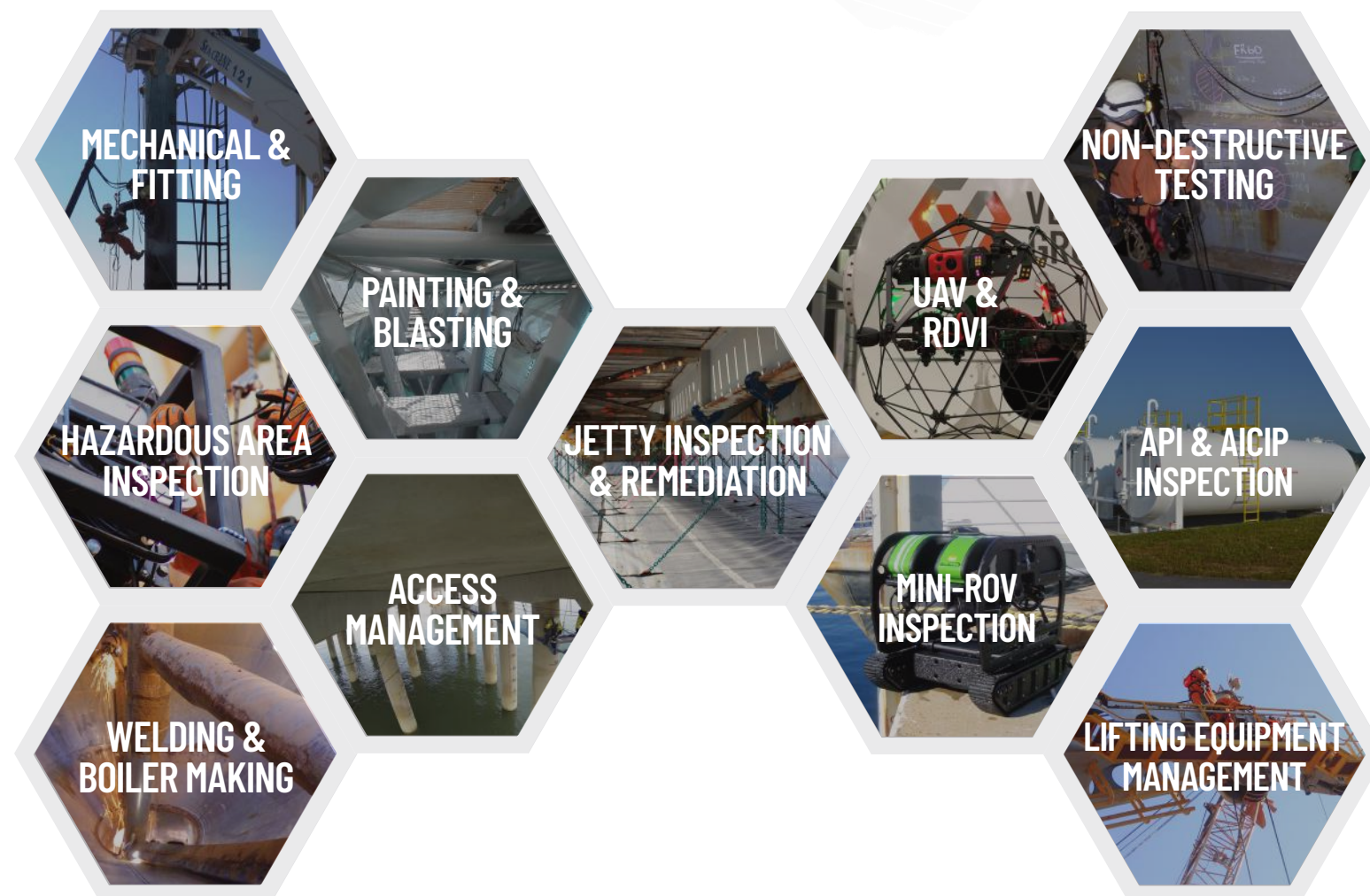
Vertech was a pioneer of rope access in Australia. We imported the first decking systems to the Asia Pacific region and were also responsible for designing and installing the first offshore safety netting & tension netting systems in Australia. Our team is also highly experienced in installing scaffold and custom access platforms on oil and gas sites, having done so across the country.

WELDING & BOILER MAKING

We offer a range of site welding services inclusive of weld procedure qualifications (WPS/ PQR/ WQRs), QA/QC and NDT verification. Our teams have completed liner replacements, bin repairs, structural repairs, jetty weld refurbishment and equipment modification work.

MAINTENANCE

INSPECTION



NON-DESTRUCTIVE TESTING

Vertech Group are certified to ISO 17205 as an NDT inspection body by the National Association of Testing Authorities (NATA). Our NDT inspection personnel are highly qualified, skilled and experienced in the application conventional & advanced inspection and testing methods.

UAV & REMOTE DIGITAL VISUAL INSPECTION (RDVI)

Vertech were the first Australasian company accredited for ABS & Lloyd's register UAV inspections. Our fleet of UAVs are capable of large land mass survey and mapping, jetty surveying, process, plant and structural inspection and confined space inspections.

Our RDVI Division has an active partnership with GE Inspection Robotics to offer cutting edge RDVI inspections. Our team combines proprietary tools and systems, with the latest crawlers and advanced camera systems to eliminate the risk of confined space entry.

API & AICIP INSPECTION

Vertech provides comprehensive inspections of pressure piping and pressure vessels. Our SMEs are trained in applying Australian and NZ in-service standards such as AS3788, AS4343 and AS1210. Our team are also qualified in API codes such as API 510, API 570, API 579 and ASME codes ASME B31.3, ASME B16.5.

When it comes to storage tanks, Vertech's team of experienced API 653 & 650 inspectors and engineers can conduct the inspection, evaluate the data, perform remnant life calculations, design weld repairs and prepare weld procedures to ensure compliance.

MINI-ROV INSPECTION

Through our wholly owned subsidiary Geo Oceans we deliver detailed structural inspections, post cyclone surveys, NDT and other detailed environmental or industrial Inspections with Mini Remotely Operated Vehicles (Mini-ROV). Deployed from the shore, jetty or nearby structure we can remove the risk, cost and time associated with diving operations.

LIFTING EQUIPMENT MANAGEMENT

Vertech provides a full end to end lifting equipment management solution backed by our NATA accredited lifting equipment inspection accreditation. We can also work with clients to implement a framework of processes to effectively manage the administrative burden & gaps usually encountered in effective lifting gear management.

SPECIALIST PACKAGES

MINING & MINERALS - SPECIALIST PACKAGES

Vertech is proud to offer outstanding services in the mining & minerals sector. We provide the very best people across Australia, New Zealand and the USA.



ASPECT

An all-encompassing above & below water turnkey jetty integrity package. Our team utilises specialised access systems, engineered decking, NDT, and mini remotely operated vehicles (ROV) to plan and implement remediations for jetties & wharves. This package has consistently recorded savings between 40-60% compared to conventional campaigns.



V-TEST

A comprehensive range of NATA accredited conventional and advanced Non-Destructive Testing (NDT) systems combined with robotic and mechanical systems to reduce confined space entry or working at height risks. This package is designed to cover the full range of statutory inspection requirement for process, plant and structure across all mining asset types.



GEO TECH

Our Geo Tech package includes survey, planning, drilling, anchoring, meshing, stabilisation and various access systems ensure the stability and safety of all geotechnical features or slopes. This package can also include UAV inspection and area surveys.



WELD LINE

Using specialist or rope access, this package provides an end-to-end service using survey, inspection and/or laser mapping. Mechanical rigging and welding services are used to complete liner plate replacements and high mobility structural repairs in a safe, fast, and efficient manner.

SONOMATIC OVERVIEW



Sonomatic is a worldwide organisation whose expertise in ultrasonic inspection design, development and application, dates back more than 30 years to our roots in the nuclear sector. Today the company has widened its focus and provides proven yet pioneering services to customers in defence and power generation, but our largest client base is in the challenging oil and gas industry, both upstream and downstream.

Sonomatic's capabilities for the development of software, systems and scanners, often for bespoke applications, coupled with the expertise of our engineers, means we are among the leaders within this highly specialised field.

Sonomatic pioneered industrial application of a range of inspection methods now widely used, e.g. Time of Flight Diffraction (TOFD), and continues with active development of innovative inspection and deployment methods that are applied by our own team of experienced field service engineers.

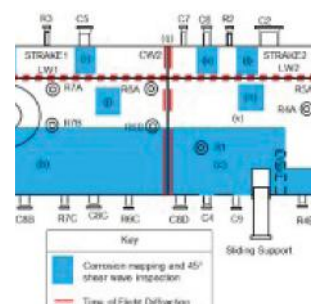
Sonomatic also provides Integrity Services, supporting our clients with planning and evaluation of inspections and using advanced statistical methods to maximise the value of data obtained. Integration of our integrity and inspection services for non-intrusive inspection (NII) benefits the client by allowing vessels and equipment suitable for NII to be identified and reduces the need for costly plant shut downs to assess the internal condition.



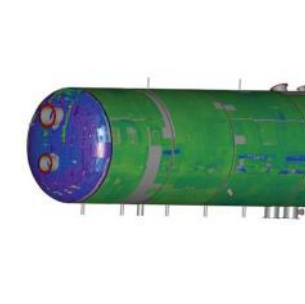
Advanced NDT Inspection



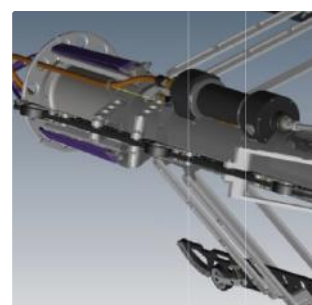
Subsea Inspection



Integrity Services



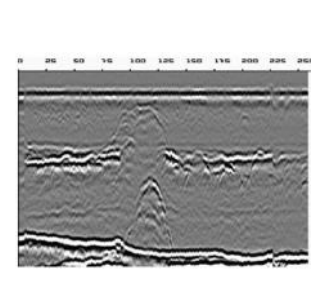
Non Intrusive Inspection



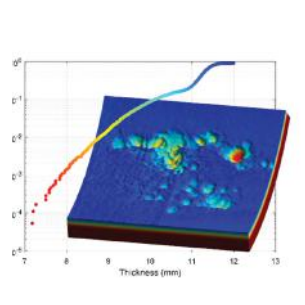
Research and Development



Robotics Inspection



Welding Engineering



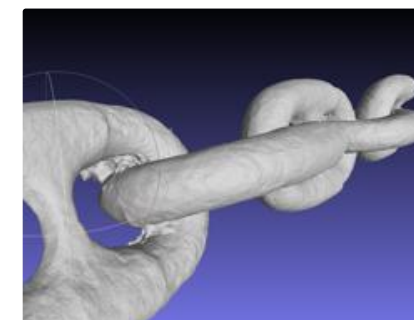
Data Science

GEO OCEANS OVERVIEW



Geo Oceans develops innovative mini-ROV technology to provide clients with asset deployed ROV inspection services. The Mini-ROV Class Survey System (CSS) consists of advanced sensor, tooling and manipulator technology that has been developed by Geo Oceans to provide cost savings compared to traditional diver and work-class ROV methodologies.

Geo Oceans also work with Vertech to provide our clients with industry-leading and turnkey Class inspection services using Remote Access technologies. Sonomatic compliment this team by bringing Specialist Advanced NDT services which are deployed using the mini-ROV CSS.



3D Component Modelling Services



Advanced Subsea NDT Services



Asset Deployed Inspections



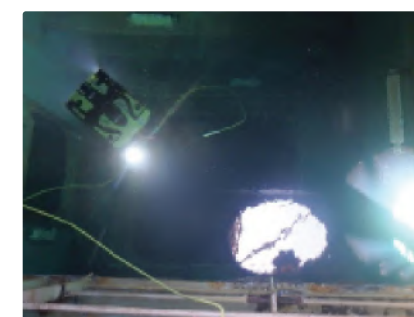
Light Tooling Services



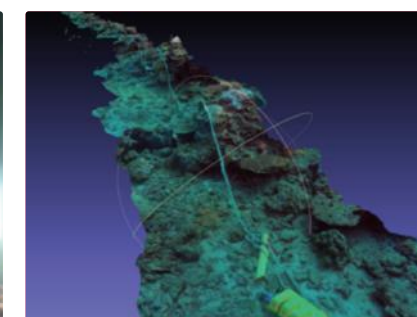
Unmanned (ROV) Hull Survey Package



Fixed Platform Mini-ROV Package



Unmanned (ROV) Class Tank Inspection & NDT Package



Unmanned Marine Science & Survey Package



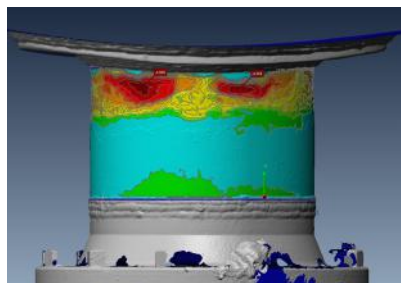
Subsea Construction and Decom Support Services

VERTECH'S OTHER SERVICES

Vertech are a Specialist Access, Inspection and Maintenance provider. We pride ourselves on our client focus with an emphasis on supplying high value, innovative and quality services to achieve excellence in all the projects we execute. We apply world's best practice on the basis of extensive industry experience to excel in industries where safety, quality and reliability are of the highest importance. The core value we place above all others is our care for each other, our clients and the environment.



Project Delivery



Integrity Management



Specialist Access



NDT Inspection Services



Marine Class Survey



Remote Digital Visual Inspection



Specialist Maintenance Packages



Irata Training



verttechgroup.com.au/downloads

CONTACTS

VERTECH

Adam Haling

Department Manager - Onshore & Projects
T: +61(8) 6168 7600
E: Adam.Haling@verttechgroup.com.au

Jon Millen

Project Manager
T: +61(8) 6168 7600
E: Jon.Millen@verttechgroup.com.au

Sean Peters

RDVI & Project Coordinator
T: +61(8) 6168 7600
E: Sean.Peters@verttechgroup.com.au

Donovan Rheeders

Inspection & Project Manager
T: +61(8) 6168 7600
E: Donovan.Rheeders@verttechgroup.com.au

Don Edmondson

Business Manager - Tank Testing Services
T: +61(8) 6168 7600
E: Don.Edmondson@verttechgroup.com.au

Amin Faridvand

Weld Engineering & Tank Testing
T: +61(8) 6168 7600
E: Amin.Faridvand@verttechgroup.com.au

SONOMATIC

Alessandro Cesan

General Manager - Australia
T: +61(0) 498 442 666
E: Alex.Cesan@sonomatic.com

Judd McCann

East Australia Manager
T: +61(0) 488 442 019
E: Judd.McCann@sonomatic.com

Tyron Kimble

Engineering Services - Australia
T: +61(0) 427 277 603
E: Tyron.Kimble@sonomatic.com

Zach McCann

South East Asia Regional Manager
T: +61(0) 404 797 670
E: Zach.McCann@sonomatic.com

GEO OCEANS

Ben Brayford

Managing Director
T: +61(8) 6168 7600
E: Ben.Brayford@geooceans.com

Nick Veitch

Operations Director
T: +61(8) 6168 7611
E: Nick.Veitch@geooceans.com

PEOPLE, SAFETY, QUALITY AND INNOVATION

VERTECH CORE VALUES